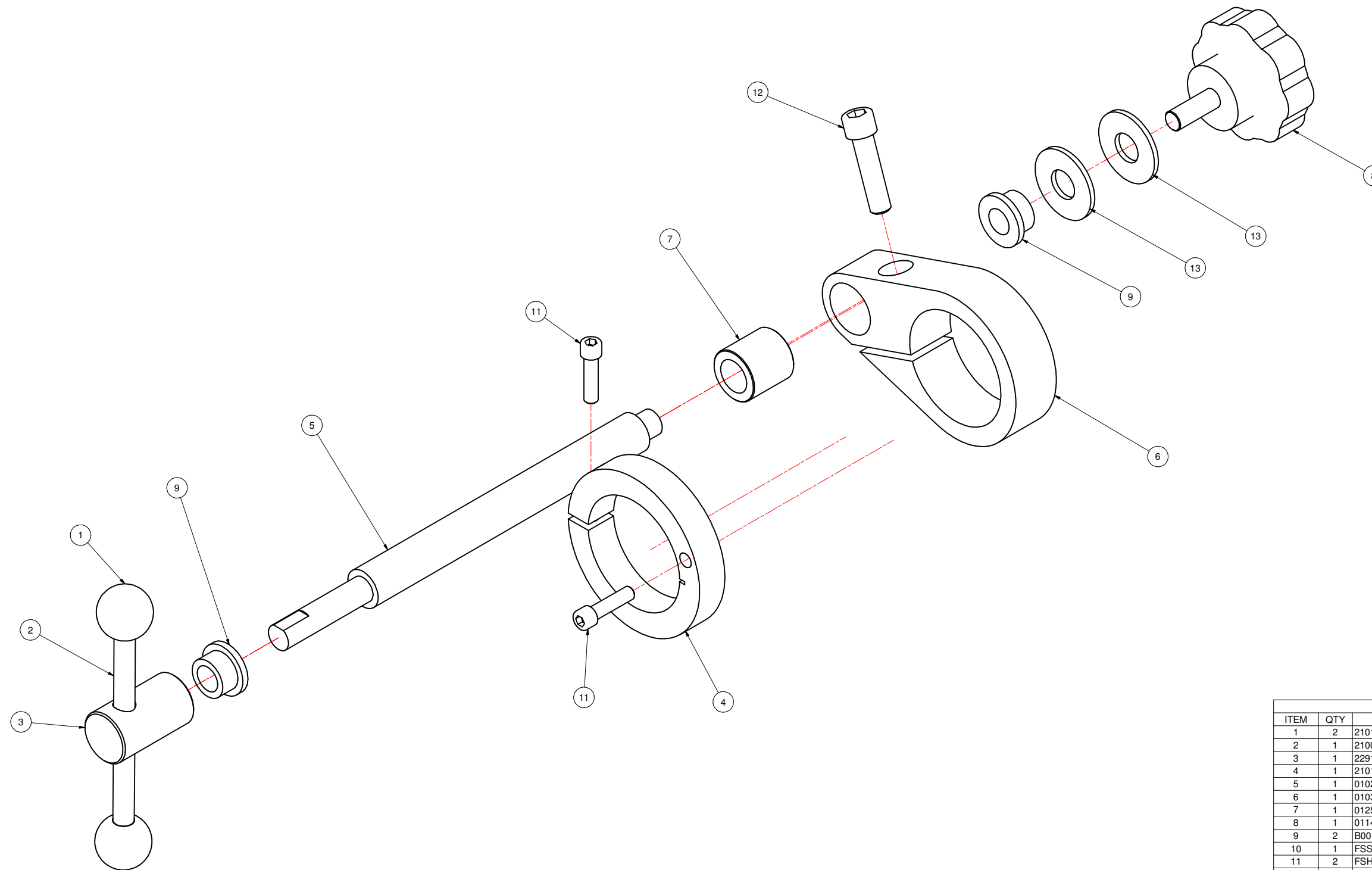


REVISION HISTORY			
REV	DESCRIPTION	DATE	BY
A	RELEASED	10/3/2005	RM



Parts List			
ITEM	QTY	PART NUMBER	DESCRIPTION
1	2	21014	CLAMPING HANDLE BALL
2	1	21009	LEAD SCREW HANDLE
3	1	22910	LEAD SCREW KNUCKLE W/O THREAD
4	1	21010-A	COLLAR, LABELING HEAD CROSTUBE CLAMP
5	1	01023	TRAVERSE SCREW
6	1	01032	TRAVERSE SCREW CLAMP
7	1	01255	TRAVERSE SCREW CLAMP BUSHING
8	1	01141	KNOB CLAMP LOCKING
9	2	B0010-008	BUSHING
10	1	FSSSD025P05	10-32 X 1/4 SET SCREW
11	2	FSHSE100B05	1/4-20 X 1 SHCS
12	1	FSHSJ150P05	3/8-16 X 1 1/2 SHCS
13	2	FFWSHP	FLAT WASHER 1/2"

MATL	PART #	CAD FILE	TRAVERSE SCREW ASSY	TOLERANCES UNLESS OTHERWISE NOTED:	<b>LOVESHAW</b> an <i>ITW</i> Company RT. 296, SOUTH CANAAN, PA.
ST. ST.	STD	PLOT DATE	10/3/2005	X = ±1.050 INCH XX = ±1.015 ANGLS ±1/2° .XXX = ±1.005 X = ±1.0mm MACH. ✓ METRIC XX = ±1.3mm FINISH ✓ .XXX = ±1.1mm	
STAINLESS - NO FINISH		<b>DO NOT SCALE PRINT</b>		TITLE	
<small>THIS DRAWING AND SUBJECT MATTER THEREON IS THE EXCLUSIVE PROPERTY OF LOVESHAW ITW AND IS TO BE TREATED BY YOU AS CONFIDENTIAL PROPRIETARY INFORMATION. THIS DRAWING OR SUBJECT MATTER THEREOF SHALL NOT BE REPRODUCED OTHER THAN FOR YOUR OWN USE OR TO BE DISCLOSED TO OTHER WITHOUT THE EXPRESSED WRITTEN CONSENT OF LOVESHAW ITW AND WILL BE RETURNED TO LOVESHAW ITW UPON REQUEST.</small>				DWG NO TRAVERSE SCREW ASSY SCALE	
DRAWN		RICHM		CHECKED	
DRAWN		RICHM		APPROVED	