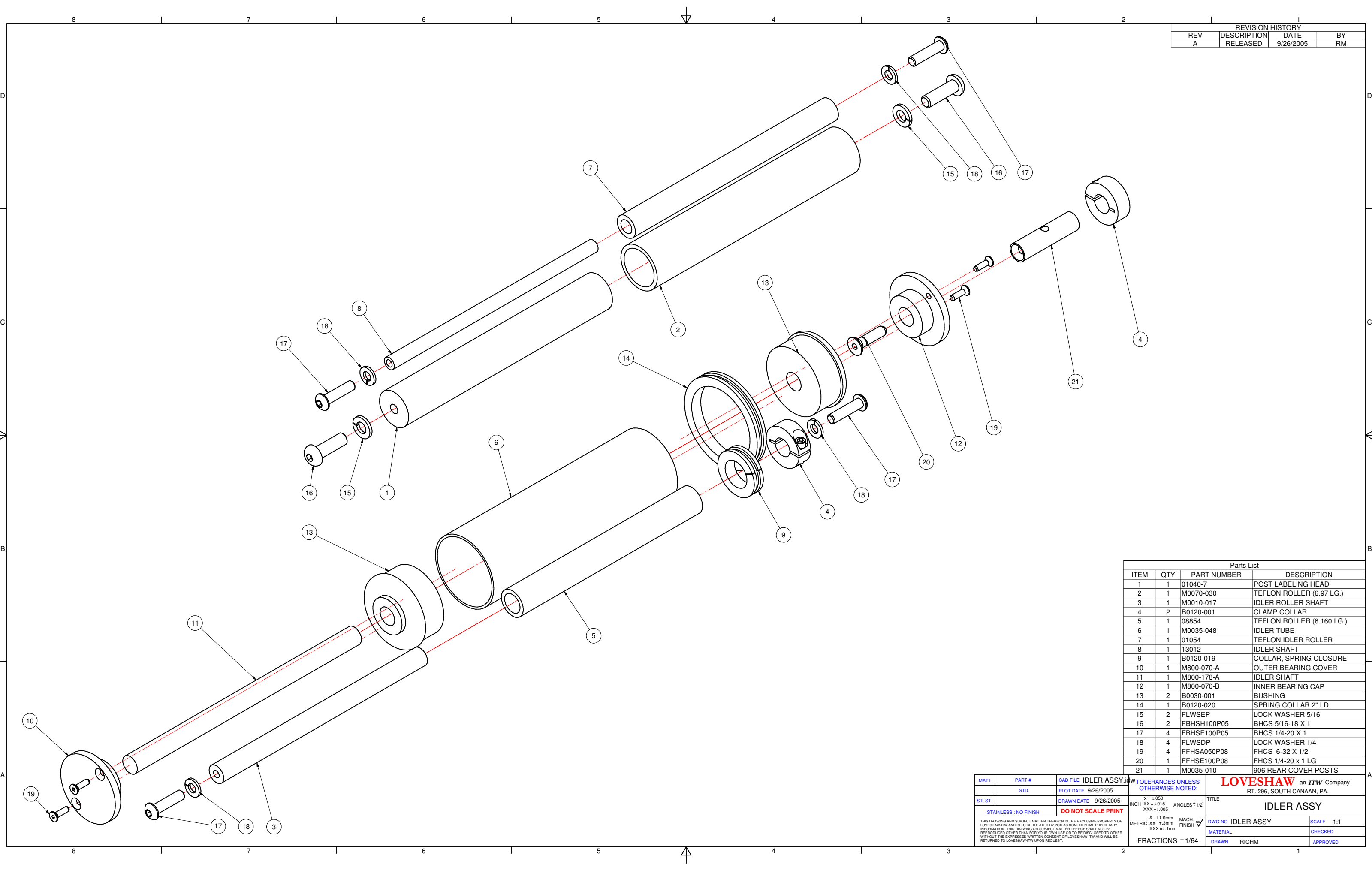


REVISION HISTORY			
REV	DESCRIPTION	DATE	BY
A	RELEASED	9/26/2005	RM



Parts List			
ITEM	QTY	PART NUMBER	DESCRIPTION
1	1	01040-7	POST LABELING HEAD
2	1	M0070-030	TEFLON ROLLER (6.97 LG.)
3	1	M0010-017	IDLER ROLLER SHAFT
4	2	B0120-001	CLAMP COLLAR
5	1	08854	TEFLON ROLLER (6.160 LG.)
6	1	M0035-048	IDLER TUBE
7	1	01054	TEFLON IDLER ROLLER
8	1	13012	IDLER SHAFT
9	1	B0120-019	COLLAR, SPRING CLOSURE
10	1	M800-070-A	OUTER BEARING COVER
11	1	M800-178-A	IDLER SHAFT
12	1	M800-070-B	INNER BEARING CAP
13	2	B0030-001	BUSHING
14	1	B0120-020	SPRING COLLAR 2" I.D.
15	2	FLWSEP	LOCK WASHER 5/16
16	2	FBHSH100P05	BHCS 5/16-18 X 1
17	4	FBHSE100P05	BHCS 1/4-20 X 1
18	4	FLWSDP	LOCK WASHER 1/4
19	4	FFHSA050P08	FHCS 6-32 X 1/2
20	1	FFHSE100P08	FHCS 1/4-20 x 1 LG
21	1	M0035-010	906 REAR COVER POSTS

MATL	PART #	CAD FILE	IDLER ASSY.IDW	TOLERANCES UNLESS OTHERWISE NOTED:	LOVESHAW an <i>ITW</i> Company RT. 296, SOUTH CANAAN, PA.
ST. ST.	STD	PLOT DATE	9/26/2005	X = ±1.050 INCH XX = ±0.015 ANGLES ±1/2° .XXX = ±1.005 X = ±1.0mm MACH. METRIC XX = ±1.3mm FINISH .XXX = ±1.1mm	
STAINLESS - NO FINISH		DO NOT SCALE PRINT		TITLE	
THIS DRAWING AND SUBJECT MATTER THEREON IS THE EXCLUSIVE PROPERTY OF LOVESHAW ITW AND IS TO BE TREATED BY YOU AS CONFIDENTIAL PROPRIETARY INFORMATION. THIS DRAWING OR SUBJECT MATTER THEREOF SHALL NOT BE REPRODUCED OTHER THAN FOR YOUR OWN USE OR TO BE DISCLOSED TO OTHER WITHOUT THE EXPRESSED WRITTEN CONSENT OF LOVESHAW ITW AND WILL BE RETURNED TO LOVESHAW ITW UPON REQUEST.				DWG NO	
				IDLER ASSY	
				SCALE 1:1	
				MATERIAL	
				DRAWN RICHM	
				CHECKED	
				APPROVED	
				FRACTIONS ± 1/64	