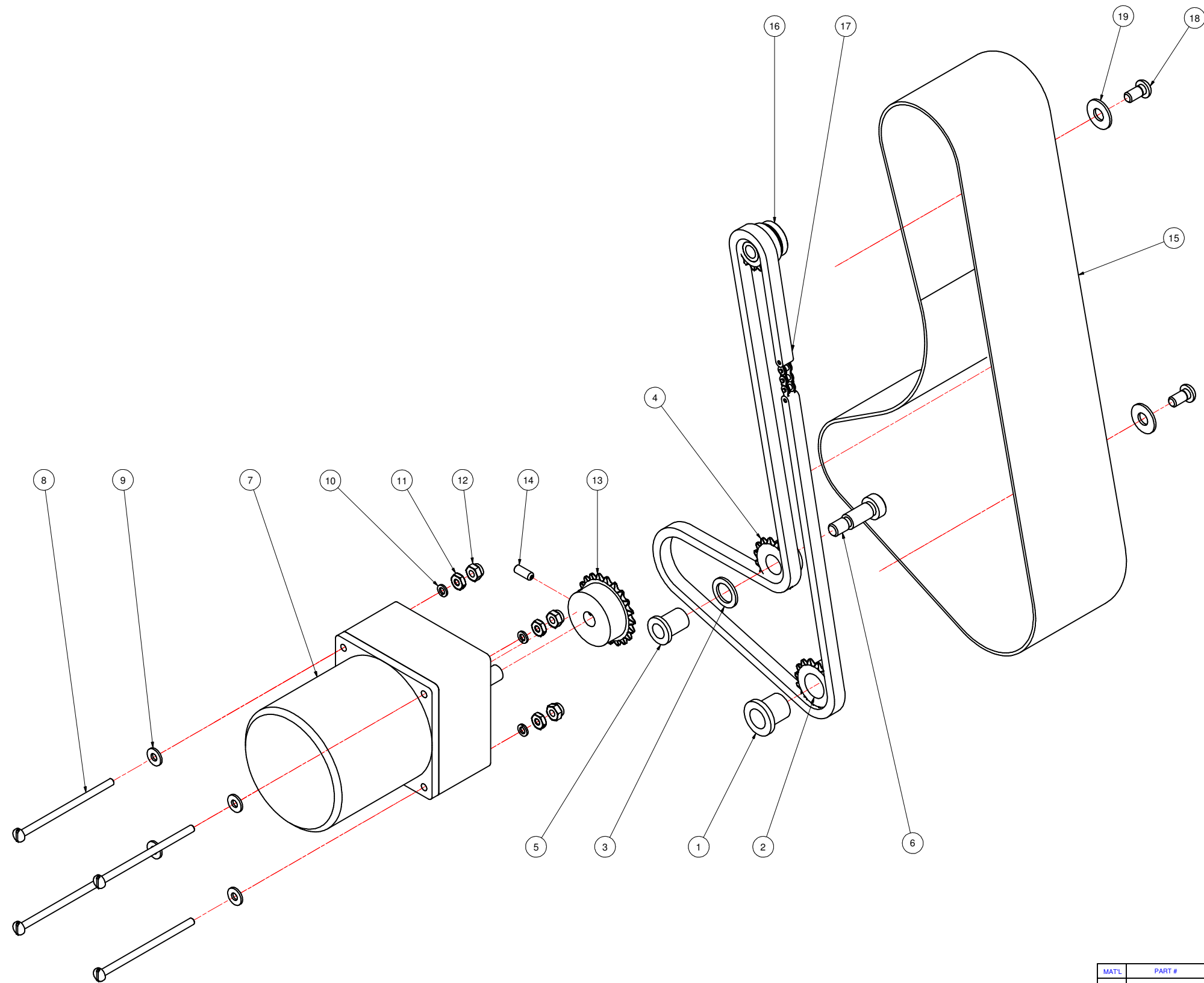


REVISION HISTORY			
REV	DESCRIPTION	DATE	BY
A	RELEASED	9/23/2005	RM



Parts List			
ITEM	QTY	PART NUMBER	DESCRIPTION
1	1	B0010-024	FLANGED BUSHING
2	1	M25B15-01	SPROCKET, 25-B-15
3	1	B0010-034	THRUST WASHER, 1/2"
4	1	08850	IDLER SPROCKET, 25-B-15
5	1	B0010-033	FLANGED BUSHING
6	1	H4080-709	SHOULDER BOLT, 3/8 X 3/4
7	1	08872-60	GEAR MOTOR, 220V, 60Hz
8	4	FPHSB300P08	PHMS 8-32 X 3
9	4	FFWSBB	#8 WASHER
10	4	FLWSBP	#8 LOCK WASHER
11	4	FHFNSBP	#8-32 HEX NUT
12	4	FNLNSBP	8-32 NYLON INSERT LOCK NUT
13	1	M25B21-02	SPROCKET, 25-B-21
14	1	FSSSD050B05	10-32 X 1/2 SET SCREW
15	1	01857	908 CHAIN COVER
16	1	08870-18	SPROCKET ASSEMBLY
17	1	.B0070-004	CHAIN ASSEMBLY
18	2	FBHSE050P05	1/4-20 BHS
19	2	FFWSDP	FLAT WASHER 1/4

MATL	PART #	CAD FILE A37483-800.idw	TOLERANCES UNLESS OTHERWISE NOTED:	LOVESHAW an <i>ITW</i> Company RT. 296, SOUTH CANAAN, PA.
ST. ST.	STD	PLOT DATE 9/23/2005	X = ±1.050 INCH XX = ±1.015 ANGLS ±1/2° .XXX = ±1.005	
		DRAWN DATE 9/23/2005	X = ±1.0mm MACH. ✓ METRIC XX = ±1.3mm FINISH ✓ .XXX = ±1.1mm	TITLE
		STAINLESS - NO FINISH	DO NOT SCALE PRINT	DRIVE PACKAGE - LS-800
<small>THIS DRAWING AND SUBJECT MATTER THEREON IS THE EXCLUSIVE PROPERTY OF LOVESHAW ITW AND IS TO BE TREATED BY YOU AS CONFIDENTIAL PROPRIETARY INFORMATION. THIS DRAWING OR SUBJECT MATTER THEREOF SHALL NOT BE REPRODUCED OTHER THAN FOR YOUR OWN USE OR TO BE DISCLOSED TO OTHER WITHOUT THE EXPRESSED WRITTEN CONSENT OF LOVESHAW ITW AND WILL BE RETURNED TO LOVESHAW ITW UPON REQUEST.</small>			FRACTIONS ±1/64	DWG NO A37483-800
				SCALE 3/8:1
				CHECKED
				APPROVED
				DRAWN RICHM