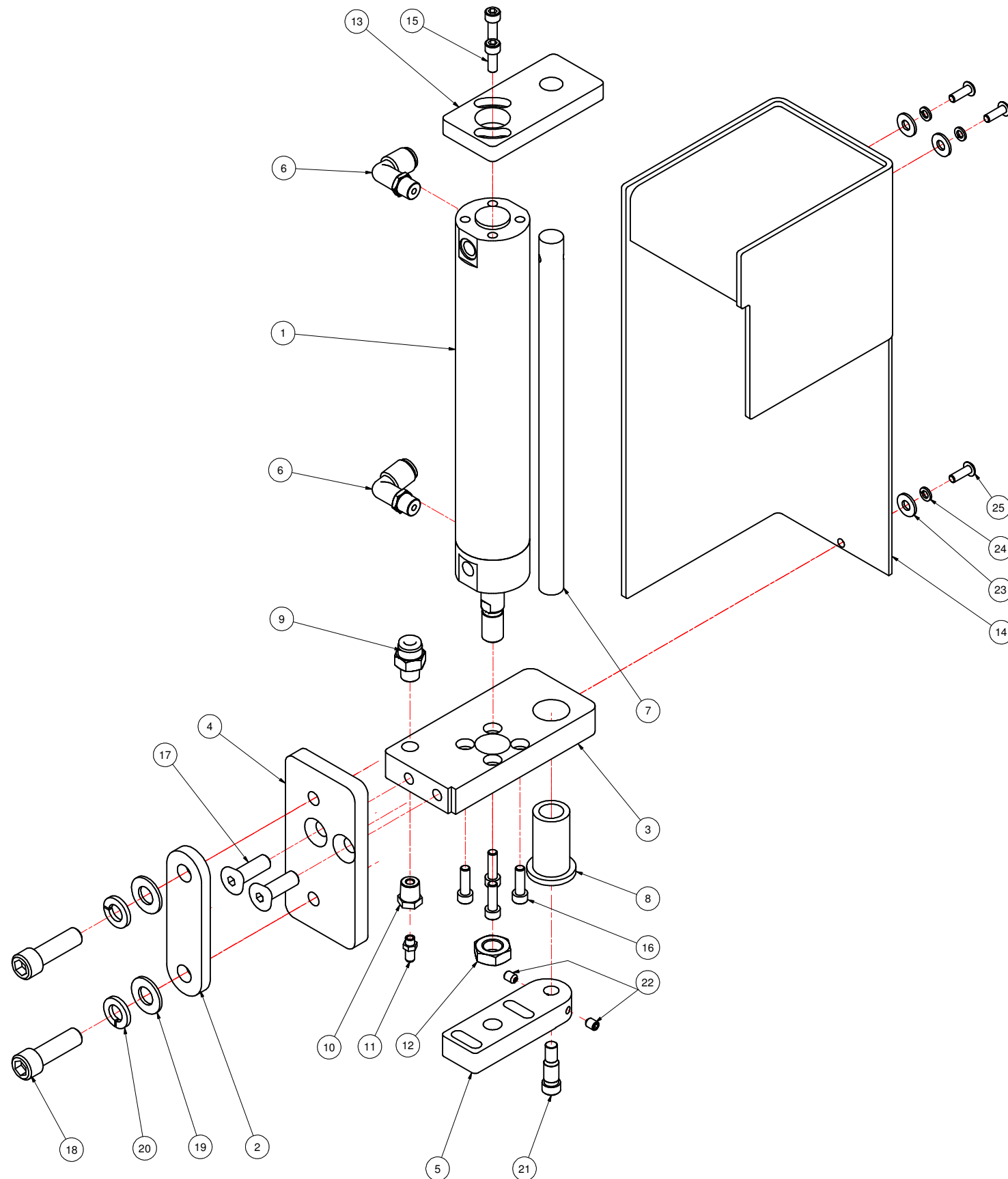


REVISION HISTORY			
REV	DESCRIPTION	DATE	BY
A	RELEASED	10/4/2005	RM



Parts List			
ITEM	QTY	PART NUMBER	DESCRIPTION
1	1	14416	AIR CYLINDER
2	1	14859	RETAINER BAR FOR 914-8
3	1	14844	APPLICATOR MNT. BLOCK
4	1	14853	APPLICATOR MOUNT PLATE
5	1	14851	APPLICATOR MOUNT BLOCK
6	2	14441	FITTING, ELBOW
7	1	14438	H.D. FOLLOWER
8	1	14443	FLANGE BEARING
9	1	P4010-003	MALE CONNECTOR
10	1	P4000-029	BRASS FITTING
11	1	14030	FITTING
12	1	FHJNSMP	7/16-20 HEX JAM NUT
13	1	08827	PROX & MICRO SWITCH MOUNT
14	1	14865-6	CYLINDER COVER
15	2	FSHSD050P05	10-32 X 1/2 SHCS
16	4	FSHSD063S05	10-32 X 5/8 SHCS
17	2	FFHSH100S05	5/16-18 X 1 FHCS
18	2	FSHSJ125S05	3/8-16 X 1 1/4 SHCS
19	2	FFWSFP	FLAT WASHER 3/8
20	2	FLWSFP	LOCK WASHER 3/8
21	1	26314	SHOULDER BOLT, 5/16 DIA X 1/2 LG.
22	2	FSSSD025P05	10-32 X 1/4 SET SCREW
23	3	FFWSCP	#10 FLAT WASHER
24	3	FLWSBP	#8 LOCK WASHER
25	3	FBHSB050B08	BHCS 8-32 X 1/2

MATL	PART #	CAD FILE 914-8-6S.idw	TOLERANCES UNLESS OTHERWISE NOTED:	LOVESHAW an <i>ITW</i> Company RT. 296, SOUTH CANAAN, PA.
ST. ST.	STD	PLOT DATE	X = ±0.050 INCH XX = ±0.015 ANGLS ±1/2° .XXX = ±0.005 X = ±1.0mm MACH. ✓ METRIC XX = ±0.3mm .XXX = ±0.1mm	
STAINLESS - NO FINISH		DO NOT SCALE PRINT	FRACTIONS ± 1/64	TITLE TAMP APPLICATOR DWG NO 914-8-6S SCALE
<small>THIS DRAWING AND SUBJECT MATTER THEREON IS THE EXCLUSIVE PROPERTY OF LOVESHAW ITW AND IS TO BE TREATED BY YOU AS CONFIDENTIAL PROPRIETARY INFORMATION. THIS DRAWING OR SUBJECT MATTER THEREOF SHALL NOT BE REPRODUCED OTHER THAN FOR YOUR OWN USE OR TO BE DISCLOSED TO OTHER WITHOUT THE EXPRESSED WRITTEN CONSENT OF LOVESHAW ITW AND WILL BE RETURNED TO LOVESHAW ITW UPON REQUEST.</small>			MATERIAL DRAWN RICHM CHECKED APPROVED	