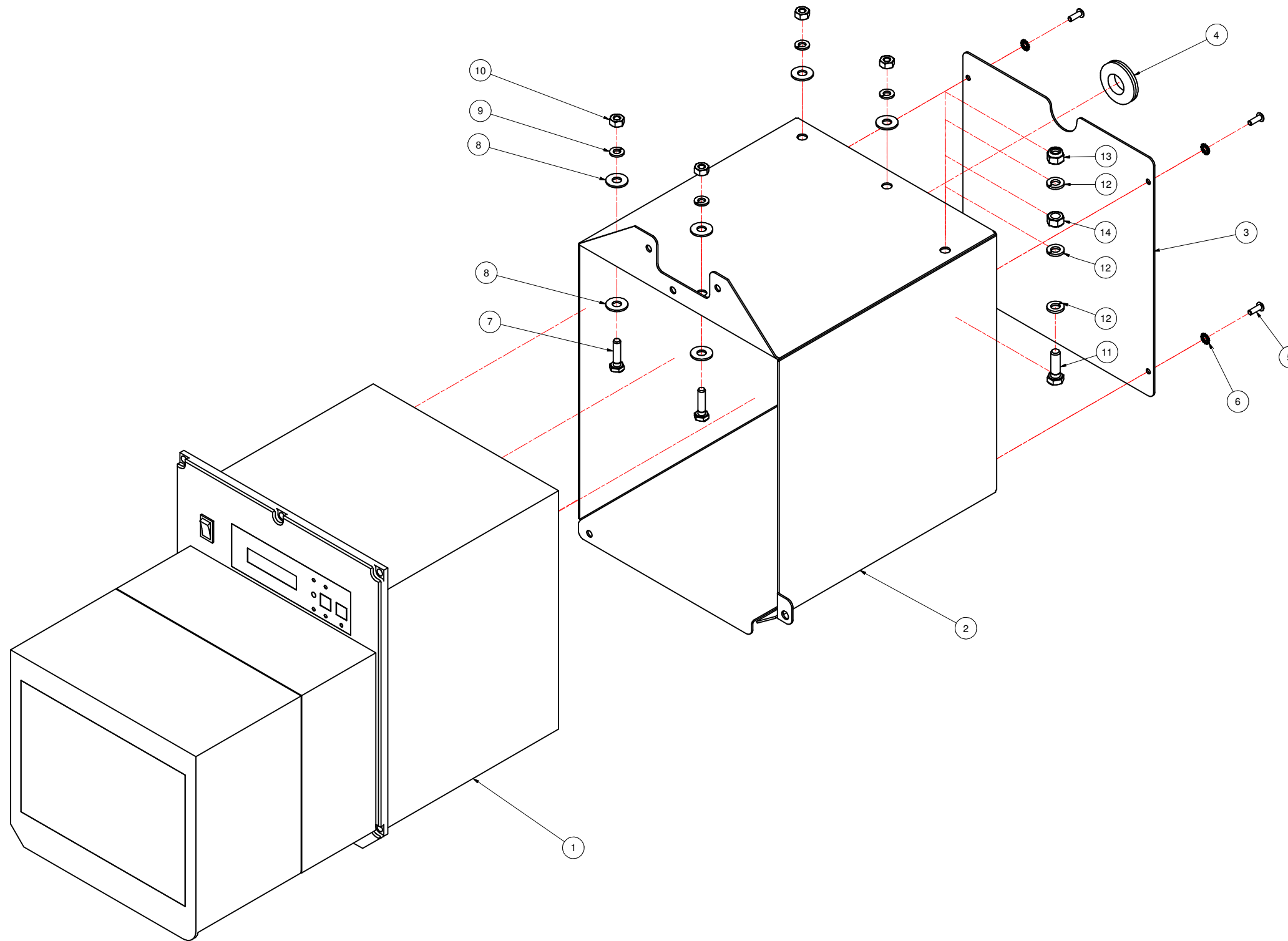


REVISION HISTORY			
REV	DESCRIPTION	DATE	BY
A	RELEASED	10/5/2005	RM



Parts List			
ITEM	QTY	PART NUMBER	DESCRIPTION
1	1	B0130-528-RH	PRINTER
2	1	M8777-003	PRINTER COVER
3	1	M8777004	DOOR, PRINTER COVER
4	1	40-030	RUBBER GROMMET
5	4	FBHSB050B08	BHCS 8-32 X 1/2
6	4	FETLWSBP	#8 External Tooth Lock Washer
7	4	FHHSE100P05	HHCS 1/4-20 X 1"
8	8	FFWSDP	FLAT WASHER 1/4
9	4	FLWSDP	LOCK WASHER 1/4
10	4	FHFNSEP	HEX NUT 1/4-20
11	1	FHHSH100P08	HHCS 5/16-18 x 1 LG. (NOT VISIBLE)
12	3	FLWSEP	LOCK WASHER 5/16
13	1	FNLNSHP	5/16 Std NC Nylock Nut
14	1	FHFNSHS	5/16 X 18 HEX NUT

MATL	PART #	CAD FILE	PRINTER ASSY.dwg	TOLERANCES UNLESS OTHERWISE NOTED:	LOVESHAW an <i>ITW</i> Company RT. 296, SOUTH CANAAN, PA.
ST. ST.	STD	PLOT DATE	10/5/2005	X = ±1.050 INCH XX = ±1.015 ANGLS ±1/2° .XXX = ±1.005 X = ±1.0mm MACH. ✓ METRIC XX = ±1.3mm FINISH ✓ .XXX = ±1.1mm	
STAINLESS - NO FINISH		DO NOT SCALE PRINT		TITLE	
<small>THIS DRAWING AND SUBJECT MATTER THEREON IS THE EXCLUSIVE PROPERTY OF LOVESHAW ITW AND IS TO BE TREATED BY YOU AS CONFIDENTIAL PROPRIETARY INFORMATION. THIS DRAWING OR SUBJECT MATTER THEREOF SHALL NOT BE REPRODUCED OTHER THAN FOR YOUR OWN USE OR TO BE DISCLOSED TO OTHER WITHOUT THE EXPRESSED WRITTEN CONSENT OF LOVESHAW ITW AND WILL BE RETURNED TO LOVESHAW ITW UPON REQUEST.</small>				DWG NO A7286-001 SCALE MATERIAL CHECKED DRAWN RICHM APPROVED	
FRACTIONS ±1/64					