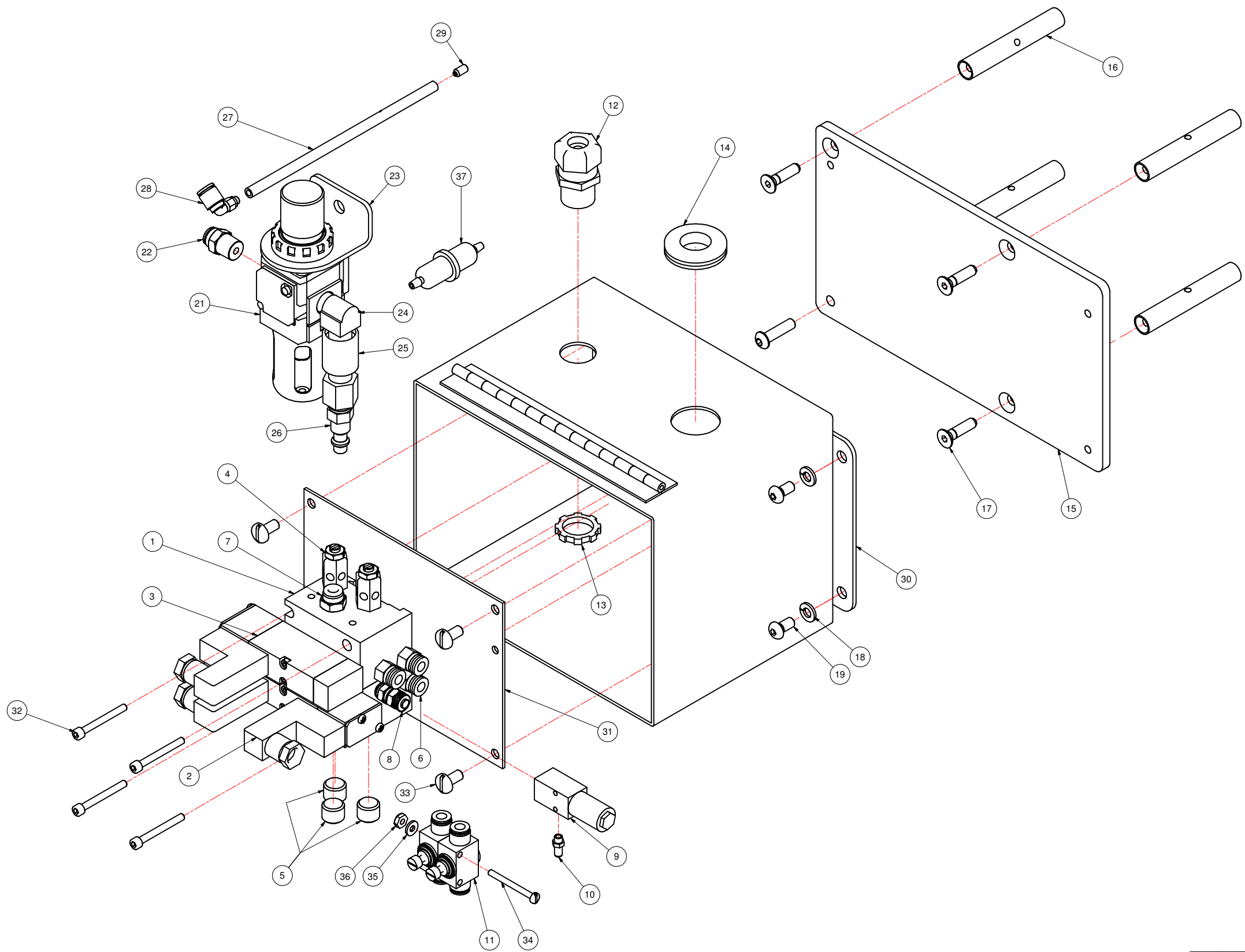


REVISION HISTORY			
REV	DESCRIPTION	DATE	BY
A	RELEASED	10/5/2005	RM



ITEM	QTY	PART NUMBER	DESCRIPTION
1	1	B621731-PC	MANIFOLD
2	1	16023	DUAL SOLENOID VALVE
3	1	16022	SINGLE SOLENOID VALVE
4	2	MS002A	MUFFLER
5	3	H109A	PLUG, HEX 1/4 NPT
6	3	N400-1	CONNECTOR 1/8 NPT x 1/4 TUBE
7	1	N400-3	CONNECTOR, 1/4 NPT TO 1/4 TUBE
8	1	P4000-046	FITTING, COMP., 1/8 NPT TO 3/16 TUBE
9	1	P5010-006	VACUUM GENERATOR
10	1	14030	FITTING
11	2	P6010-001	FLOW CONTROL
12	1	AH199D	STRAIN RELIEF
13	1	AH117	1/2" LOCKNUT
14	1	40-030	RUBBER GROMMET
15	1	M8777-002	PLATE TO MOUNT PNEU. ENCLOSURE
16	4	M0035-011	908 REAR COVER POSTS
17	3	FFHSE100P08	FHCS 1/4-20 x 1 LG
18	4	FLWSDP	LOCK WASHER 1/4
19	3	FBHSE050P05	1/4-20 BHS
20	1	FBHSE100P05	BHCS 1/4-20 X 1
21	1	14058-B	FILTER/REGULATOR
22	1	P4010-027	CONNECTOR, 1/8 NPT TO 1/4 TUBE
23	1	14060	FILTER REGULATOR MOUNT
24	1	H107	BRASS FITTING
25	1	14405	VALVE AIR SHUT OFF
26	1	PF-22	QUICK DISCONNECT
27	1	08056	SINGLE HOLE AIR TUBE
28	1	14012	MALE HOLE, 10-32 THD. X 1/4 TUBE
29	1	FSSSD037B05	10-32 X 3/8 SET SCREW
30	1	M-E269-02	PNEUMATIC ENCLOSURE
31	1	M-E72635-02	SUB-PANEL, PNEUMATIC ENCLOSURE
32	4	FSHSB150B08	SHCS #8-32 x 1.5
33	4	FPHSE050P05	PHCS 1/4-20 x 1/2
34	1	FPHSA150S08	PHCS #6-32 x 1.5
35	1	FFWSAS	#6 Type A Plain Washer
36	1	FHFNSAS	6-32 NUT, STAINLESS
37	1	P5000-001	FILTER

MATL	PART #	CAD FILE A247-269.idw	TOLERANCES UNLESS OTHERWISE NOTED:	LOVESHAW an ITW Company RT. 296, SOUTH CANAAN, PA.
ST. ST.	STD	PLOT DATE	X = ±1.050 INCH XX = ±0.015 ANGLS ±1/2° .XXX = ±1.005	
STAINLESS - NO FINISH		DO NOT SCALE PRINT	X = ±1.0mm MACH. FINISH METRIC XX = ±1.3mm .XXX = ±1.1mm	TITLE AIR BOX ASSEMBLY
THIS DRAWING AND SUBJECT MATTER THEREON IS THE EXCLUSIVE PROPERTY OF LOVESHAW ITW AND IS TO BE TREATED BY YOU AS CONFIDENTIAL PROPRIETARY INFORMATION. THIS DRAWING OR SUBJECT MATTER THEREOF SHALL NOT BE REPRODUCED OTHER THAN FOR YOUR OWN USE OR TO BE DISCLOSED TO OTHER WITHOUT THE EXPRESSED WRITTEN CONSENT OF LOVESHAW ITW AND WILL BE RETURNED TO LOVESHAW ITW UPON REQUEST.			DWG NO A247-269 MATERIAL DRAWN RICHM	SCALE CHECKED APPROVED
			FRACTIONS ± 1/64	