

LOVESHAW

Little David™ Case Sealer

LDXSS 2.0

Stainless Steel Uniform Bottom Belt Case Sealer



Version: H 9/3/2015

Operator's Manual

LITTLE DAVID™ CASE SEALER

LDXSS 2.0 Operation

Copyright © Loveshaw
Loveshaw
2206 Easton Turnpike, PO. Box 83
South Canaan, PA 18459
Tel: 1-800-962-2633 • 570-937-4921
Fax: 570-937-4016

www.loveshaw.com

Loveshaw Europe
Unit 9 Brunel Gate
West Portway Industrial Estate
Andover, Hampshire SP10 3SL
ENGLAND
Tel: 264-357511
Fax: 264-355964

Tuesday, November 04, 2014

Table of Contents

Chapter 1: Introduction

Chapter 2: Operating Safety

Chapter 3: Overview

Chapter 4: Installation

Chapter 5: Theory of Operation

Chapter 6: Machine Components

Chapter 7: Maintenance

Chapter 8: Troubleshooting

Chapter 9: Warranty

Chapter 10: Assembly Drawings and Schematic

Chapter 11: Machine Special Options

Introduction

Thank you for purchasing the Little David™ case sealer, the LDXSS 2.0. The LDXSS 2.0 is uniform bottom belt drive case sealer. The LDXSS 2.0 is a robust built 24/7 case sealer constructed of quality materials, bearing, and electrical components. All employees who will be required to operate and maintain the case sealer **must** read this manual to ensure safe operation as well as proper set-up and maintenance throughout the life of the machine. After reading this manual, you will know how to perform the following functions,

- How to operate the machine safely.
- How to set the conveyor height of the machine
- How to set the head height.
- How to adjust the side rails width.
- Troubleshooting and replacing of worn or defective parts.

Throughout this manual there are several illustrations designed to help you perform the variety of tasks described.

Operating Safety

Observe the warnings and cautions below when using the Little David LDXSS 2.0 case sealer. Within this manual, all safety labels are depicted with location and part number. If a safety label is missing or not legible it must be replaced immediately. Failure to follow safety labels can lead to injury or damage to the machine.

Instruction: Requirement to System Operation

Instruction: An electrical receptacle must be located near the machine. The line cord connection to the receptacle is the disconnect means for the machine. The receptacle must be located in an area that is easily accessible to all personnel.

Warning: Potential Bodily Injury

Warning: Always disconnect all sources of energy to the machine before performing maintenance. Sources of energy include electrical and pneumatic. Refer to your company's lock out tag out procedures.

Warning: Never bypass or remove safety guards from the machine or tape cartridge.

Warning: Never override safety devices such as Emergency Stop switches.

Warning: Never adjust the machine or tape cartridges when the machine is operating.

Warning: Never place hands or body inside confines of the machine unless top head assembly is locked in place and all power sources are locked out.

Warning: Never wear jewelry, loose clothing, such as ties, scarves etc and long hair must be pulled back when operating this machine.

Warning: Never pull a jammed box out of the machine while it is in operation. Stop machine and raise head with bypass switch.

Warning: When feeding a semi automatic case sealer always hold the top flaps down a rear of box, to avoid accidental entrapment in the machine

This manual contains operator information for Little David Application Equipment. It is directed toward the person who operates and maintains the machine. Read through the manual completely before operating the machine. Thereafter, refer to it as necessary.

Take special note of all warnings, cautions, and maintenance instructions. Like any other piece of equipment, the Little David Case Sealer functions best when maintained and used correctly.

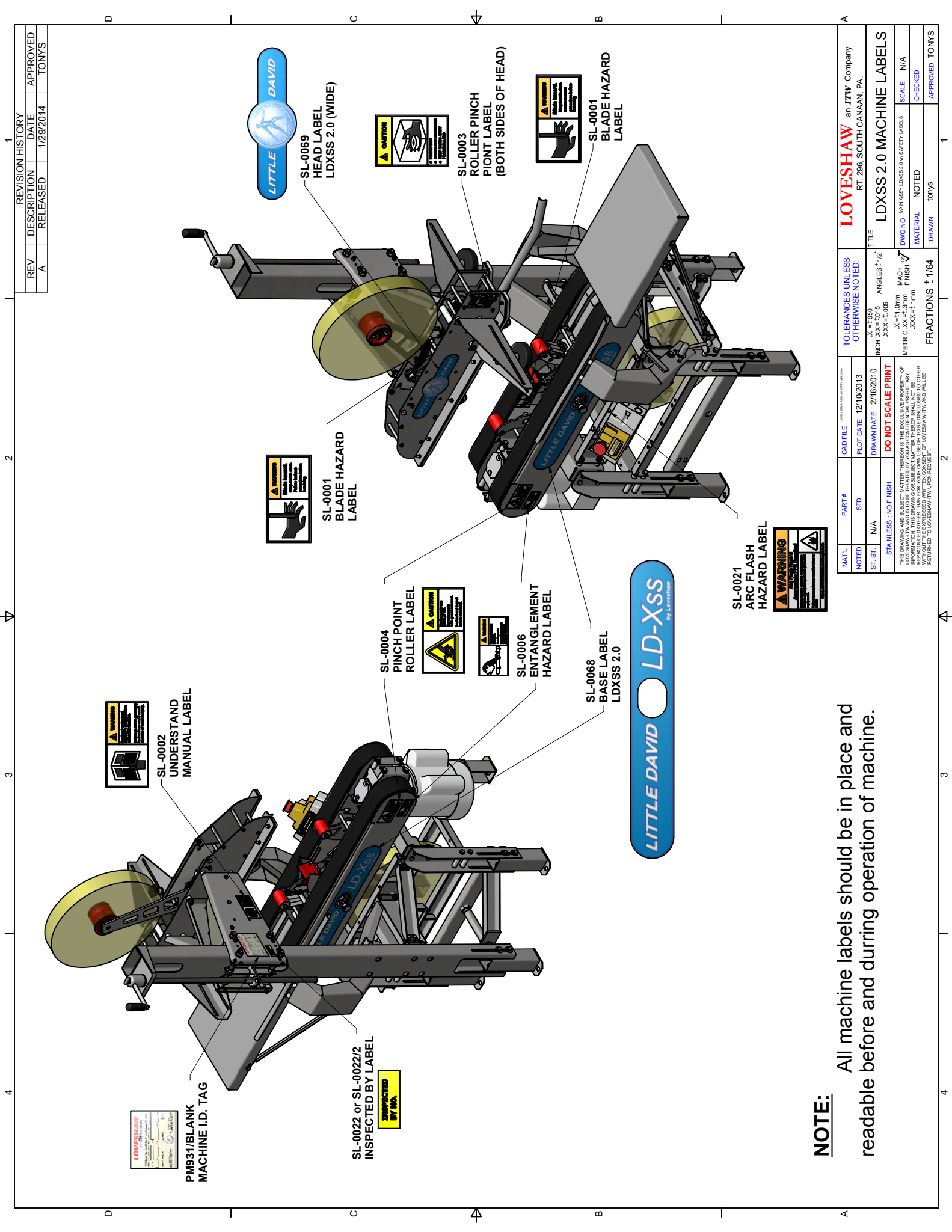
Caution: Potential Machine Damage:

Caution: Never push or drag machine across the floor with the top head assembly fully raised. Makes sure it is completely lowered.

Caution: Never pull the machine by its pack table or side rails.

Caution: Provide and use proper electrical power.

Caution: Do not operate, maintain, or otherwise use this machine, except as described in this manual.



REVISION HISTORY			APPROVED
REV	DESCRIPTION	DATE	TONYS
A	RELEASED	1/29/2014	TONYS

MATL	PART #	CAD FILE	DATE	PLT DATE	2/16/2010	12/10/2013
NOTED	STD					
ST:ST	N/A					
STAINLESS: NO FINISH DO NOT SCALE PRINT THIS DRAWING IS THE PROPERTY OF LOVESHAW. IT IS TO BE USED FOR THE MANUFACTURE OF THE MACHINE ONLY. IT IS NOT TO BE REPRODUCED OR TRANSMITTED IN ANY FORM OR BY ANY MEANS, WITHOUT THE EXPRESS WRITTEN CONSENT OF LOVESHAW. ITY AND VALUE RETURNED TO LOVESHAW-ITV UPON REQUEST.						

TOLERANCES UNLESS OTHERWISE NOTED:	
X = ±.050	ANGLES ±1/2°
INCH XX = ±.015	MACH FINISH
METRIC XX = ±.3mm	FINISH
.XXX = ±.1mm	
FRACTIONS ± 1/64	

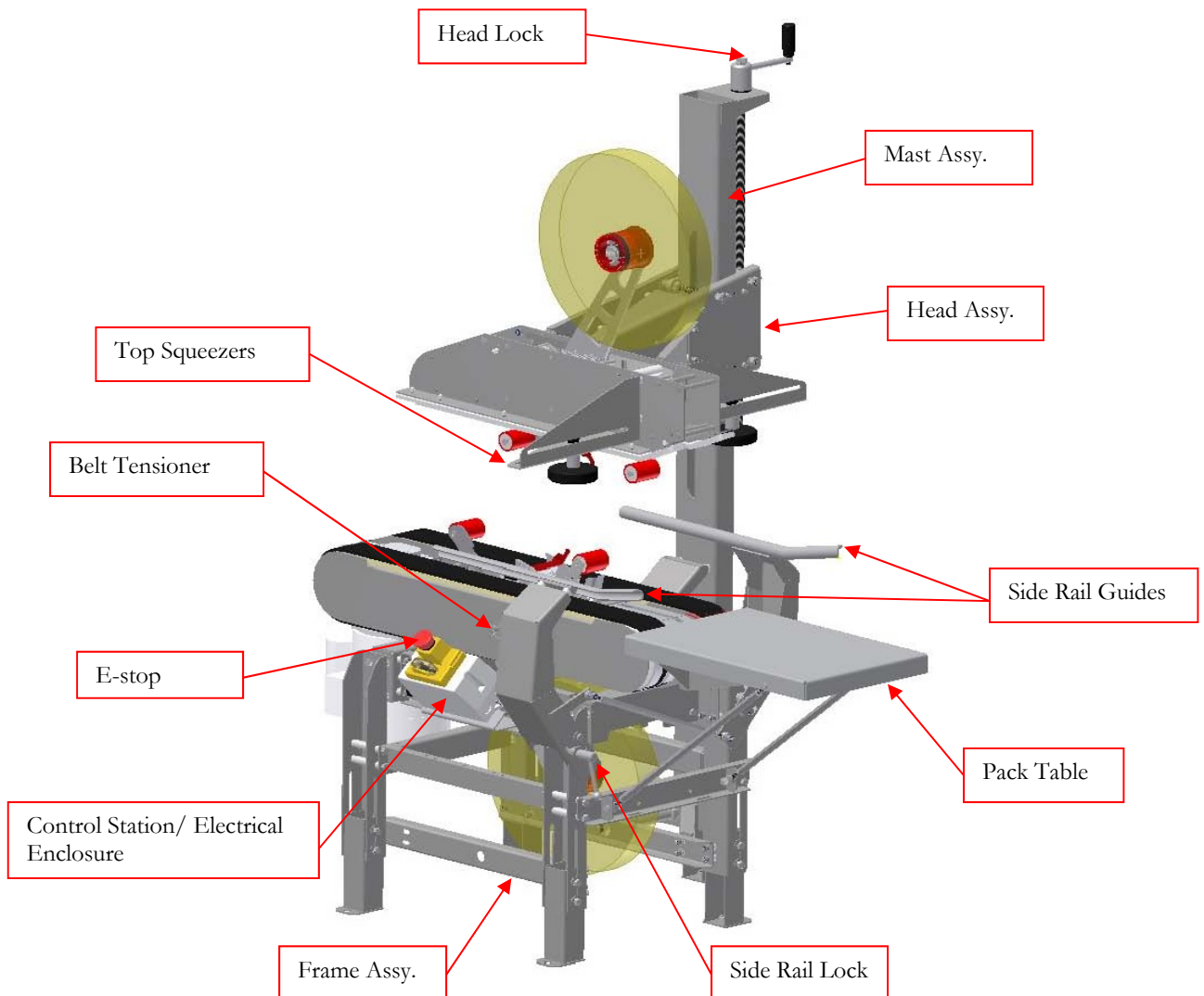
LOVESHAW an ITW Company	
RT. 296, SOUTH CANAAN, PA.	
TITLE	LDXSS 2.0 MACHINE LABELS
DWG NO.	LDXSS 2.0 SAFETY LABELS
SCALE	N/A
CHECKED	
DRAWN	TONYS
APPROVED	TONYS

NOTE: All machine labels should be in place and readable before and during operation of machine.

Case Sealer Sections

Overview

This manual covers several parts of the machine. The following diagram identifies the key sections of the machine.



Machine Specifications

Machine dimensions:

- Height: 61.44" @ 22.25" conveyor height
- Width: 33.49" (Approx. Width)
- Length: 34.22" (51.20" with pack table)
- Conveyor height: 22.25" to 25.75" – Standard

Electrical Requirements:

- Standard Voltage: 120/1/60 with 10 amp dedicated service.
- Optional voltages are available consult factory.

Operating speed:

- Standard belt speed: 80 ft./ min.
-

Air Requirement:

- N/A

Machine box capacity:

- Length: - 4.5" (114.3) min. to infinite
 - Width: - 4.50" (114.3) min. to 27" (685.8) max. (2" tape)
 - Width: - 5.50" (139.7) min. to 27" (685.8) max. (3" tape)
 - Height: 4.50" (114.3) min. to 24" (609.6) max.
3.50" (88.9) min. with reduced tape tabs
-

Installation

Always check for any signs that the machine may have been damaged before fully removing it from the shipping skid. If machine arrives damaged contact Loveshaw immediately to help in filing a claim with shipping company.

Section 1: Placing the Machine

The case sealer is fully assembled and ready for operation.

Step One: Carefully remove the machine from the shipping skid. Remove all fasteners and brackets holding the machine to the skid.

Step Two: *Take care removing the machine from the skid. Use a forklift or similar device to complete this task.*

Step Three: Move machine to designate location. It may be necessary to adjust the conveyor height of the machine. The legs on the machine are adjustable by loosening the leg clamping hardware and moving the leg to its proper position. The use of a jack or forklift is required.

Theory of Operation

LDXSS 2.0

The LDXSS 2.0 needs to be manually adjusted for the width and height of the box to be sealed.

With the machine off, a box will need to be placed between the side rail arms. Locate the head lock knob. Raise the head assembly by losing the lock knob on the top of the mast weldment. With the lock knob loose rotate the head lift crank till it clears the box then rotate the lock knob to lock the head in place.

(NOTE: Do not place the box on top or under cartridge while adjusting drives or head assembly. Damage may result.)

While holding the box in placed between the side rails loosen the side rail lock knob and rotate the side rails in towards the box. When the side rails contact the box on both sides tighten the side rail lock knob. Fold all four top flaps of the box, holding them down unlock and then rotate the crank to lower the head assembly till it is just resting on top of the box then lock the head in place with head lock knob.

Start machine and the box will be pulled through with the bottom belt drives and exit the machine. It may be necessary to increase the head pressure if the box stalls. Loosen the head lock knob and then apply downward pressure by rotating the head lift crank to increase drive pressure. **(NOTE: Excess pressure will cause box damage and too little will cause box to stall.)**

Key design features:

The LDXSS 2.0 is a uniform manual adjusted side belt case sealer.

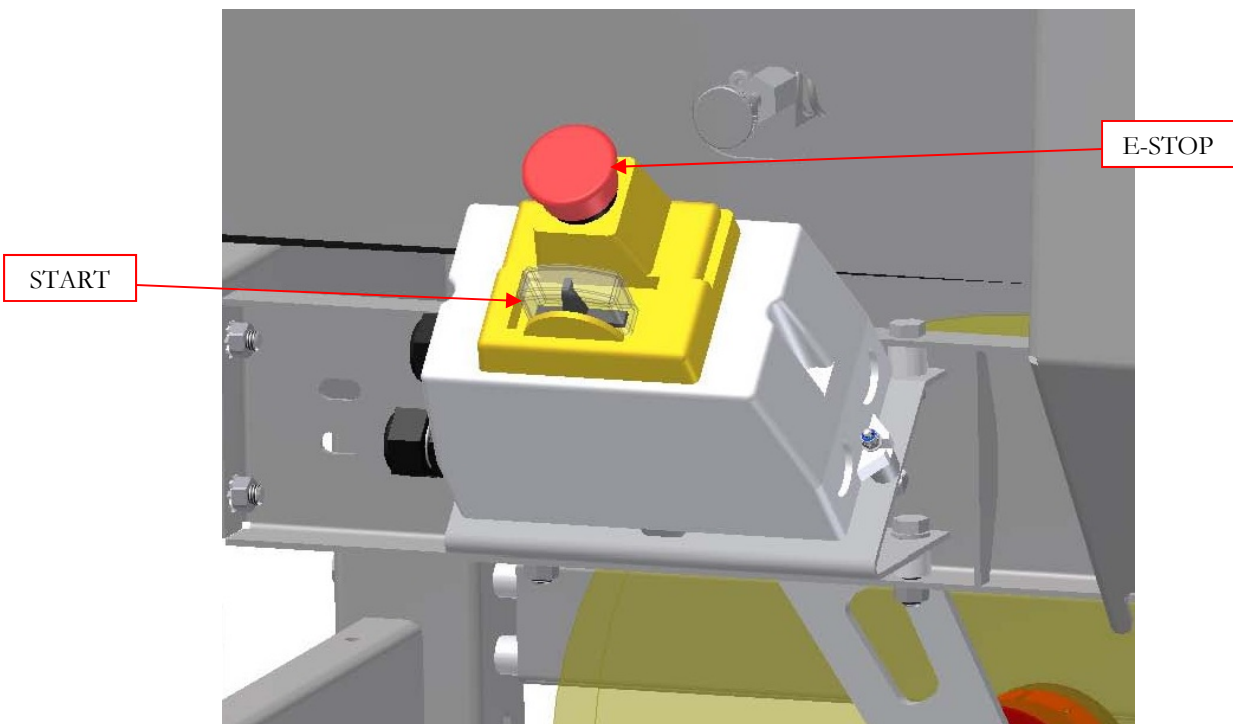
Some of the key features are.

- Stainless steel and non-corrosive material construction.
 - Sanitary design (material stand offs & cleaning access)
 - Easy access internal mounted bottom belt tensioners with sealed stainless steel bearings.
 - Self-tracking industrial grade endless belts.
 - 2" to 3" tape cartridge capability (Fill plates and hardware required for change from 3" to 2" in base. Head assembly requires longer head shafts from 2" to 3".
 - Self-centering open concept side rail guides.
 - Smooth and precise vertical hand crank head adjustment
 - Roller bearings on mast assembly for long life.
-

Machine Components

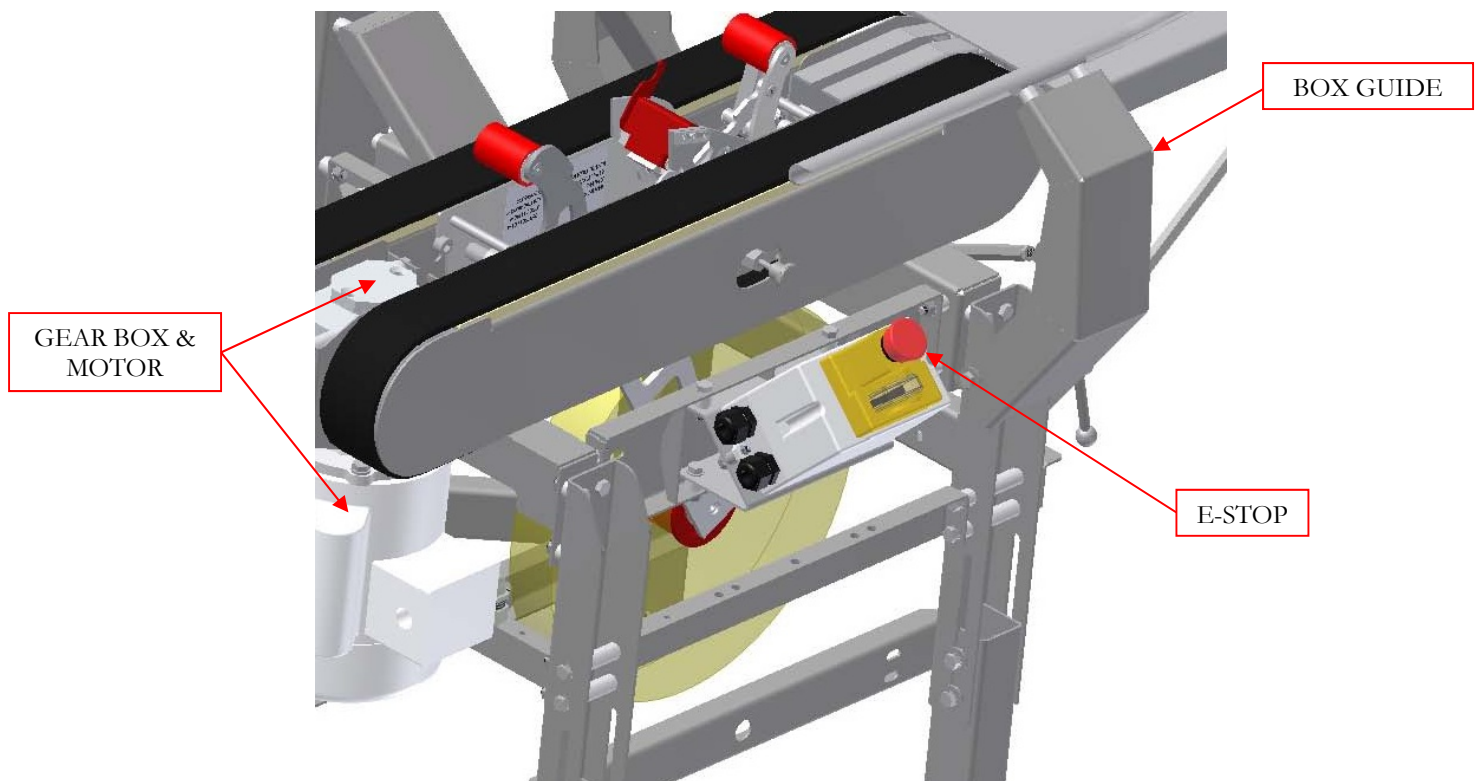
Control Station / Electrical Enclosure

The control station consist of an electrical enclosure, push pull mushroom head emergency stop switch and a start switch with motor overload relay.



Bottom Belt Drive Assembly

The bottom belt drive assembly consist of (1) 1/3 hp. motor, (2) idler /tension assembly, (1) gear box and (2) guided rough top belts. The bottom belt drive assembly; assist in conveying the box forward through the machine. The endless rough top belt has an integral guide rib on the back of it. This guide eliminates any sophisticated apparatus to track the belt. The endless belt feature has increased longevity over conventional laced belting. The tensioner when adjusted maintains the tension on the drive roller.

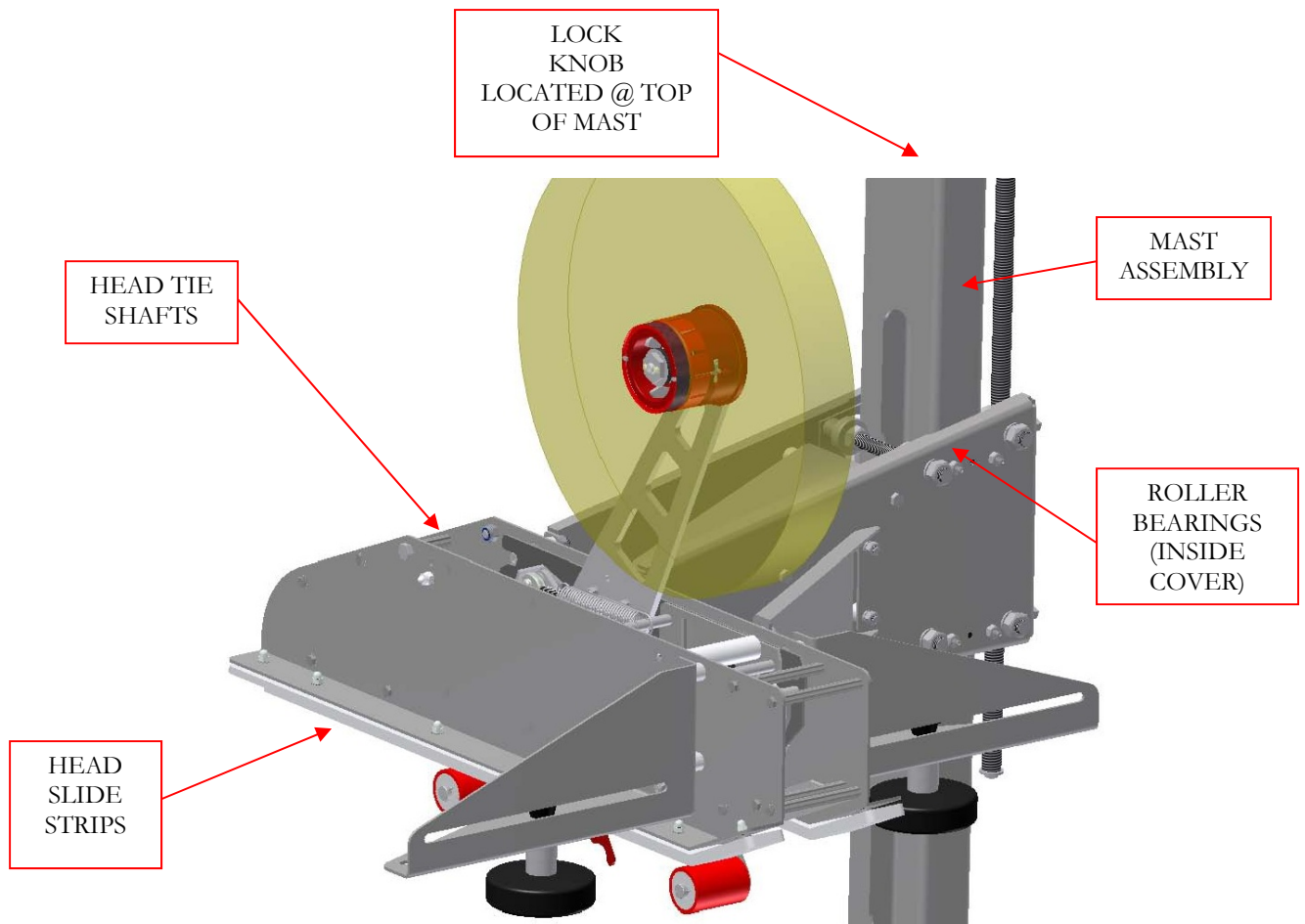


Head Assembly & Mast Assembly

The head assembly consists of a sheet metal parts, roller bearings, slide plates and stand offs. The assembly can be converted to a 2" wide or 3" wide cartridge cavity by changing the tie shafts and mast stand offs. The horizontal surface that contact the box is made of a low friction plastic that provides a long wear surface.

Internal sealed roller bearings and low friction slide plates provide smooth vertical head weldment travel on the mast assembly.

The mast assembly is made up of a vertical structural tube, vertical adjustment screw, hand crank and lock knob.

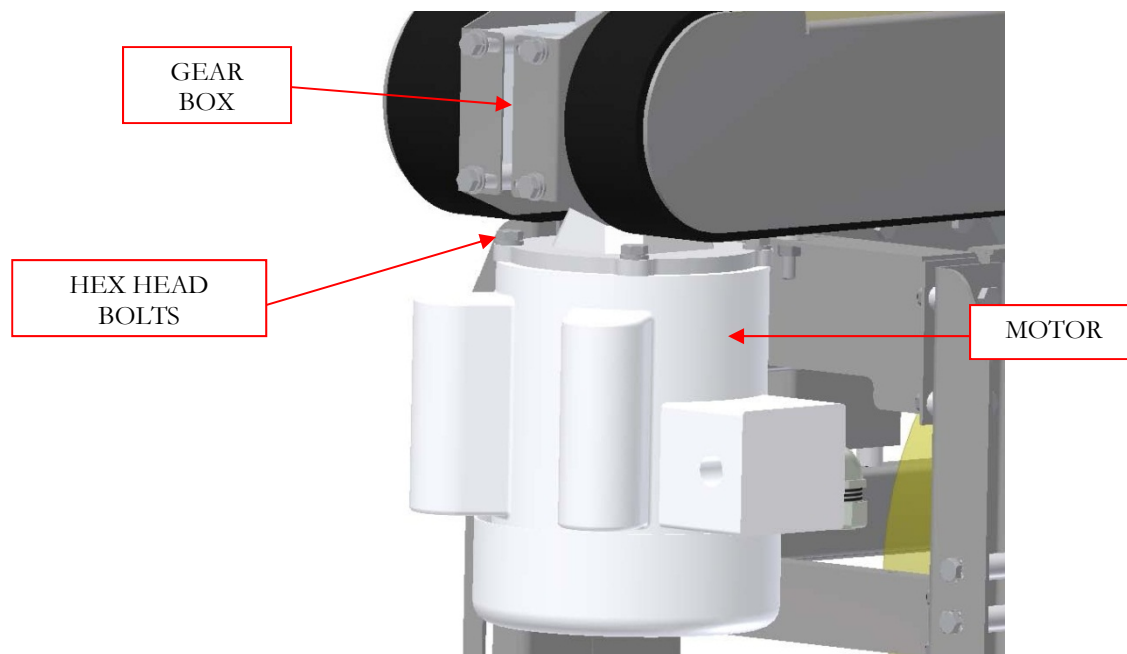


Maintenance

Safety: NEVER perform any maintenance on the LDXSS 2.0 without first following your company's **LOCKOUT / TAG OUT** procedures.

Replacing bottom belt drive motor

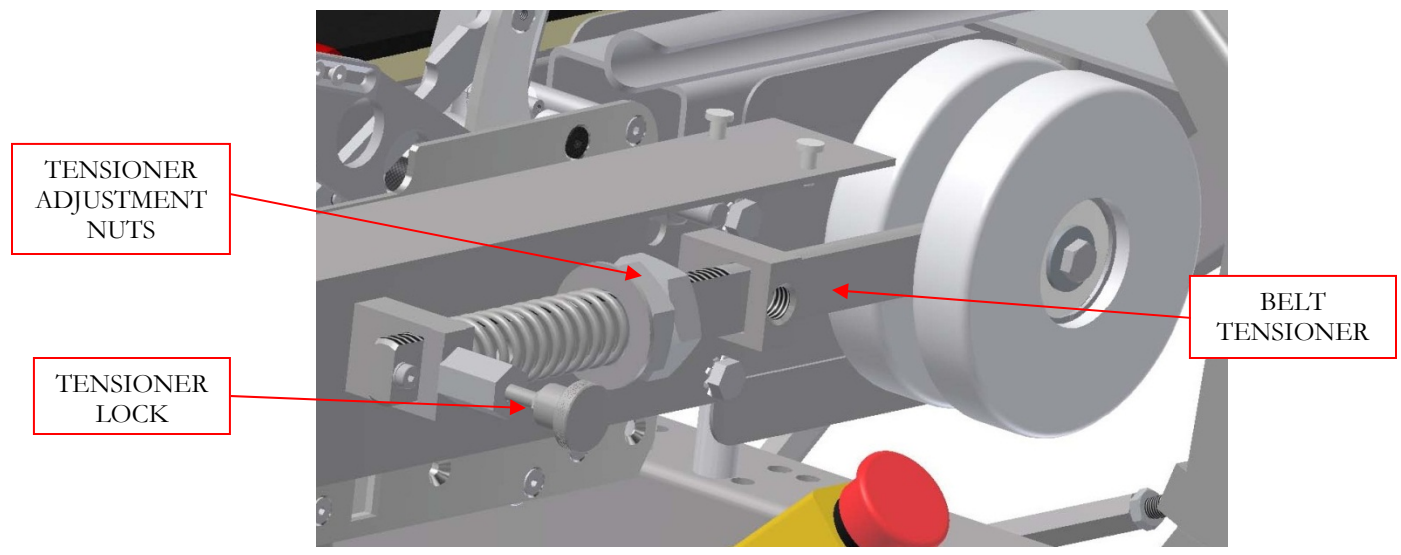
1. Disconnect electrical or unplug machine.
2. Loosen or remove cradles holding motor cable. This will provide slack in the line after removing motor from gear box. It may be necessary cut a few wire ties to allow some slack in the line. Note there location for replacement later.
3. Hold or support motor while removing (4) hex head bolts between motor and gear box. Before removing motor note orientation for reinstallation. Remove motor by sliding it down out of gear box.



4. Unwire existing motor noting wire locations.
5. Rewire new motor and apply never seize to new key.
6. Install new motor in original orientation & tighten hardware.
7. Close wire cradles and replace wire ties on motor cable.
8. Re-connect electrical supply or plug in machine and run as normal.

Replacing bottom belt & tensioner access.

1. Disconnect electrical or unplug machine.
2. Pull up on center of belt while applying light pressure inward on tensioner lock until it is fully engaged.
3. Slide belt off machine. Exit side first then entrance side.
4. Remove white plastic belt guide by sliding back till key hole slot lines up with pin, then remove.
5. Remove side guard with same procedure.
6. Adjust tensioner by compressing spring for more belt tension. **Note** that full compression of spring may not allow tensioner lock to engage and or cause damage to it.



7. Replace belts, install guards, wear strips then pull up on belts. While holding up pull tensioner lock pin out. Allow belts to rest on guide but make sure they are aligned with drive roller and idlers.
8. Re-connect electrical supply or plug in machine and run as normal.

Machine Maintenance:

Daily----- Clean machine (as required)

Inspect bottom belts

Weekly----- Check / Adjust belt tensioner

Inspect area around motor / gearbox

Inspect front tensioner rollers

Monthly---- Check / Adjust head wear pads

Cartridge Maintenance: Refer to cartridge area of manual

Troubleshooting:

PROBLEM	CAUSE	CORRECTIVE ACTION
Machine will not start.	Emergency stop switch(s) activated either No incoming power. Motor overload tripped	Check that E-stop switch is not engaged. Check machine fuses and plant receptacle. Check overload
Box jamming in machine.	Box is out of range of machine. Box is voided and head is crushing it. Tape cartridge problems. Bottom drive belting worn. Box is over filled.	Do not run out of spec box. Adjust head balance regulator. Check tape cartridge troubleshooting. Replace drive belts. Adjust box contents.
Top head assy. won't move.	Lock knob engaged Guide bearing / wear pad tight..	Check that lock knob is not engaged. Adjust guide bearing / wear pads.
Drive belts are slipping.	Belts are not tensioned. Tape cartridge adjusted to high Belts are worn.	Adjust tensioner spring. Adjust stop inside tape cartridge. Replace drive belts.

Warranty:

CASE SEALER, CUSTOM & SPECIAL APPLICATIONS

Little David® Warranty

For: All Standard Little David® Semi-Automatic Case Sealers.
All Standard LD-16 Series Fully Automatic Case Sealers.

All Special Application Case Sealers (Fully & Semi Automatic).

2 YEAR WARRANTY ON DRIVE MOTOR

2 YEAR WARRANTY ON GEAR MOTOR

2 YEAR WARRANTY ON GEAR REDUCER

3 YEAR WARRANTY ON TAPE CARTRIDGE

(EXCEPT FOR MOVING PARTS THAT ARE SUBJECT TO NORMAL WEAR, TEAR AND REPLACEMENT WHICH ARE WARRANTED ONLY TO BE FREE FROM DEFECTS IN MATERIAL AND WORKMANSHIP.)

1 YEAR ON PLC

1 YEAR ON SERVO DRIVE

1 YEAR ALL OTHER PARTS

Except for wear and moving parts.

*LIMITED WARRANTY – **LOVESHAW** (HEREIN AFTER "**LOVESHAW**")

WARRANTS ONLY THAT THE GOODS SOLD BY IT SHALL BE FREE FROM DEFECTS IN MATERIAL AND WORKMANSHIP, UNDER PROPER AND NORMAL USE AND MAINTENANCE,

AS FOLLOWS:

<u>DRIVE MOTOR</u> -	2 YEARS
<u>GEAR REDUCER</u> -	2 YEARS
<u>GEAR MOTOR</u> -	2 YEARS (THIS APPLIES TO SIDE BELTS ONLY)
<u>TAPE CARTRIDGE</u> -	3 YEARS (EXCEPT FOR MOVING PARTS AND PARTS WHICH ARE SUBJECT TO NORMAL WEAR, TEAR AND REPLACEMENT WHICH ARE WARRANTED ONLY TO BE FREE FROM DEFECTS IN MATERIAL AND WORKMANSHIP);
<u>PLC</u> -	1 YEAR
<u>SERVO DRIVE</u> -	1 YEAR
<u>ALL OTHER PARTS</u> -	1 YEAR (EXCEPT FOR MOVING PARTS AND PARTS, WHICH ARE SUBJECT TO NORMAL WEAR, TEAR AND REPLACEMENT WHICH ARE WARRANTED ONLY TO BE FREE FROM DEFECTS IN MATERIAL AND WORKMANSHIP).

THE WARRANTY PERIOD SHALL COMMENCE AS OF THE DATE OF DELIVERY TO THE PURCHASER. THE

OBLIGATION OF **LOVESHAW** UNDER THIS WARRANTY IS STRICTLY LIMITED TO THE COST OF REPAIRING OR REPLACING, AS **LOVESHAW** MAY ELECT, ANY PART OR PARTS THAT PROVE IN **LOVESHAW'S** JUDGMENT TO HAVE BEEN DEFECTIVE IN MATERIAL OR WORKMANSHIP AT THE TIME THE GOODS WERE SHIPPED FROM **LOVESHAW'S** PLANT. ANY WARRANTY CLAIM NOT MADE IN WRITING TO **LOVESHAW** AT ITS HOME OFFICE WITHIN THE APPLICABLE WARRANTY PERIOD AND WITHIN 10 DAYS OF FAILURE WILL NOT BE VALID. THIS IS THE SOLE AND EXCLUSIVE REMEDY AVAILABLE UNDER THIS WARRANTY. UNDER NO CIRCUMSTANCES WILL **LOVESHAW** BE LIABLE FOR INCIDENTAL, SPECIAL OR CONSEQUENTIAL DAMAGES.

IF REQUESTED BY **LOVESHAW**, PURCHASER SHALL RETURN ANY DEFECTIVE PART OR PARTS TO **LOVESHAW'S** PLANT, FREIGHT PREPAID. ALL WARRANTY PART REPLACEMENT AND REPAIRS MUST BE MADE BY **LOVESHAW** OR A **LOVESHAW** DEALER AUTHORIZED TO HANDLE THE GOODS COVERED BY THIS WARRANTY. ANY OUTSIDE WORK OR ALTERATIONS DONE WITHOUT **LOVESHAW'S** PRIOR WRITTEN APPROVAL WILL RENDER THIS WARRANTY VOID. **LOVESHAW** an **ITW** COMPANY WILL NOT ASSUME ANY EXPENSE OR LIABILITY FOR ANY REPAIRS MADE TO ITS GOODS OUTSIDE ITS WORKS WITHOUT ITS PRIOR WRITTEN CONSENT. THIS WARRANTY SHALL NOT APPLY TO ANY ITEM THAT HAS NOT BEEN USED, OPERATED, AND MAINTAINED IN ACCORDANCE WITH **LOVESHAW'S** RECOMMENDED PROCEDURES. **LOVESHAW** SHALL HAVE NO LIABILITY WHATSOEVER WHERE THE GOODS HAVE BEEN ALTERED, MISUSED, ABUSED OR INVOLVED IN AN ACCIDENT.

NO PERSON IS AUTHORIZED TO MAKE ANY WARRANTY OR TO CREATE ANY LIABILITY BINDING UPON **LOVESHAW**, WHICH IS NOT STATED IN THIS WARRANTY. THIS WARRANTY IS EXPRESSLY IN LIEU OF ALL OTHER WARRANTIES OF ANY KIND, EXPRESSED OR IMPLIED, WHICH ARE HEREBY EXCLUDED. IN PARTICULAR, THE IMPLIED WARRANTY OF MERCHANTABILITY, AS WELL AS THE IMPLIED WARRANTY OF FITNESS FOR A PARTICULAR PURPOSE ARE HEREBY EXCLUDED.

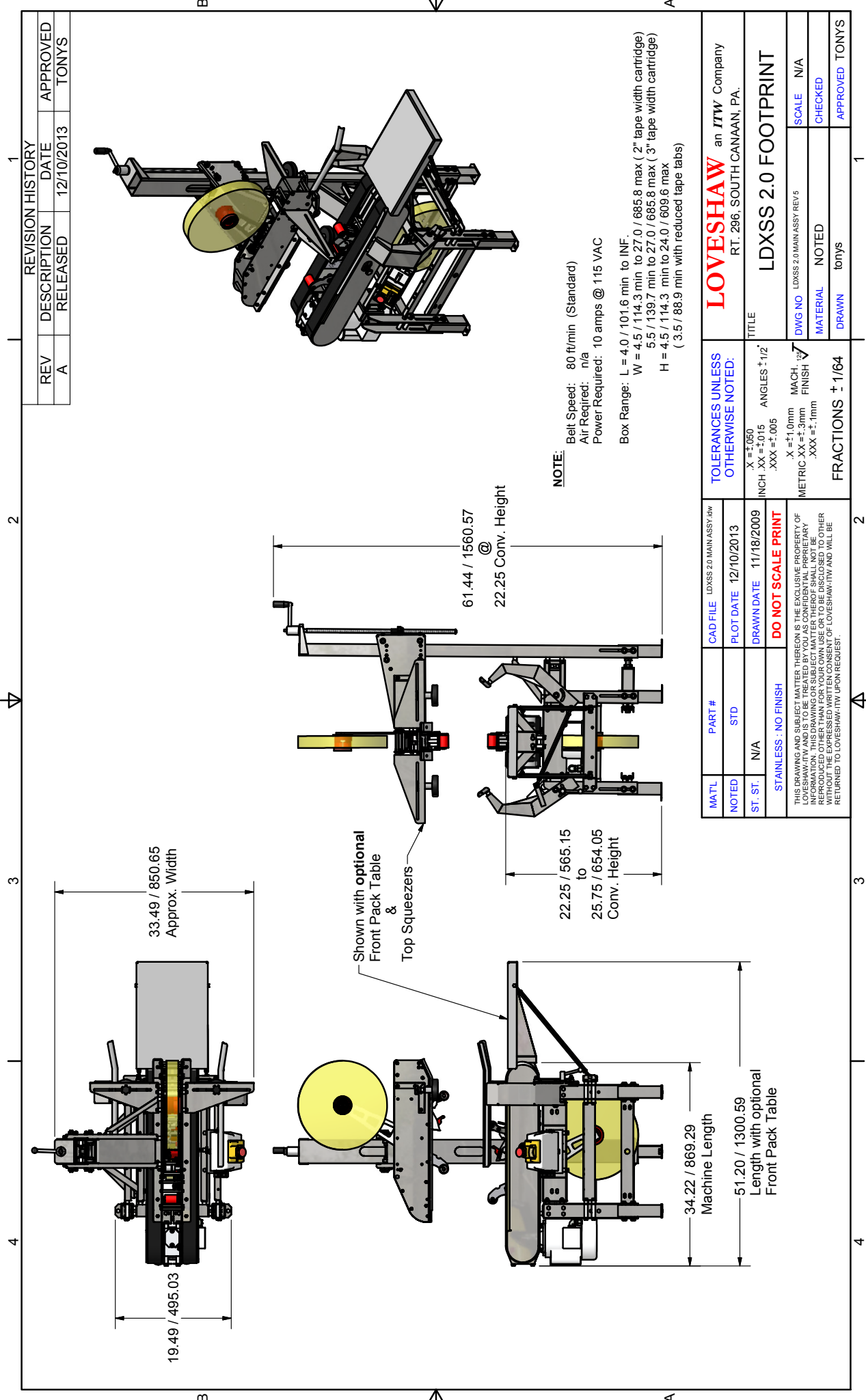
LOVESHAW

2206 Easton Turnpike, South Canaan,, PA 18459
570.937.4921 - 800.572.3434 - FAX 570.937.3229

Chapter

10

ASSEMBLY DRAWINGS AND SCHEMATICS

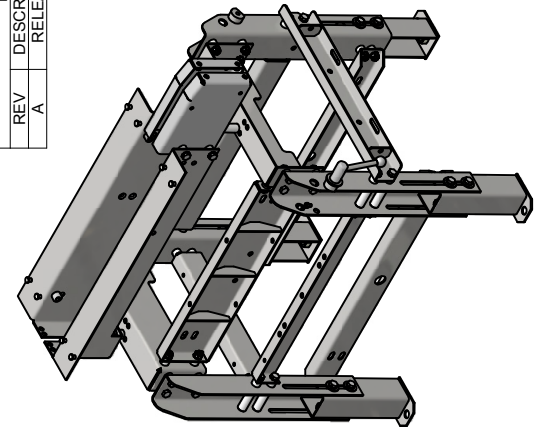


REVISION HISTORY			
REV	DESCRIPTION	DATE	APPROVED
A	RELEASED	12/10/2013	TONYS

MATL	PART #	CAD FILE	LDXSS 2.0 MAIN ASSY.BW
NOTED	STD	PLOT DATE	12/10/2013
ST. ST.	N/A	DRAWN DATE	11/18/2009
STAINLESS : NO FINISH			
THIS DRAWING AND SUBJECT MATTER THEREON IS THE EXCLUSIVE PROPERTY OF LOVESHAW-ITW AND IS TO BE TREATED BY YOU AS CONFIDENTIAL PROPRIETARY INFORMATION. THIS DRAWING OR SUBJECT MATTER THEREOF SHALL NOT BE REPRODUCED OTHER THAN FOR YOUR OWN USE OR TO BE DISCLOSED TO OTHER PERSONS WITHOUT THE WRITTEN PERMISSION OF LOVESHAW-ITW AND WILL BE RETURNED TO LOVESHAW-ITW UPON REQUEST.			
TOLERANCES UNLESS OTHERWISE NOTED:		TITLE	
X = ±.050		LDXSS 2.0 FOOTPRINT	
INCH .XX = ±.015		DRAWN	
.XXX = ±.005		tonys	
X = ±1.0mm		MACH. FINISH	
METRIC .XX = ±.3mm		NOTED	
.XXX = ±.1mm		CHECKED	
FRACTIONS ± 1/64		APPROVED	
		TONYS	

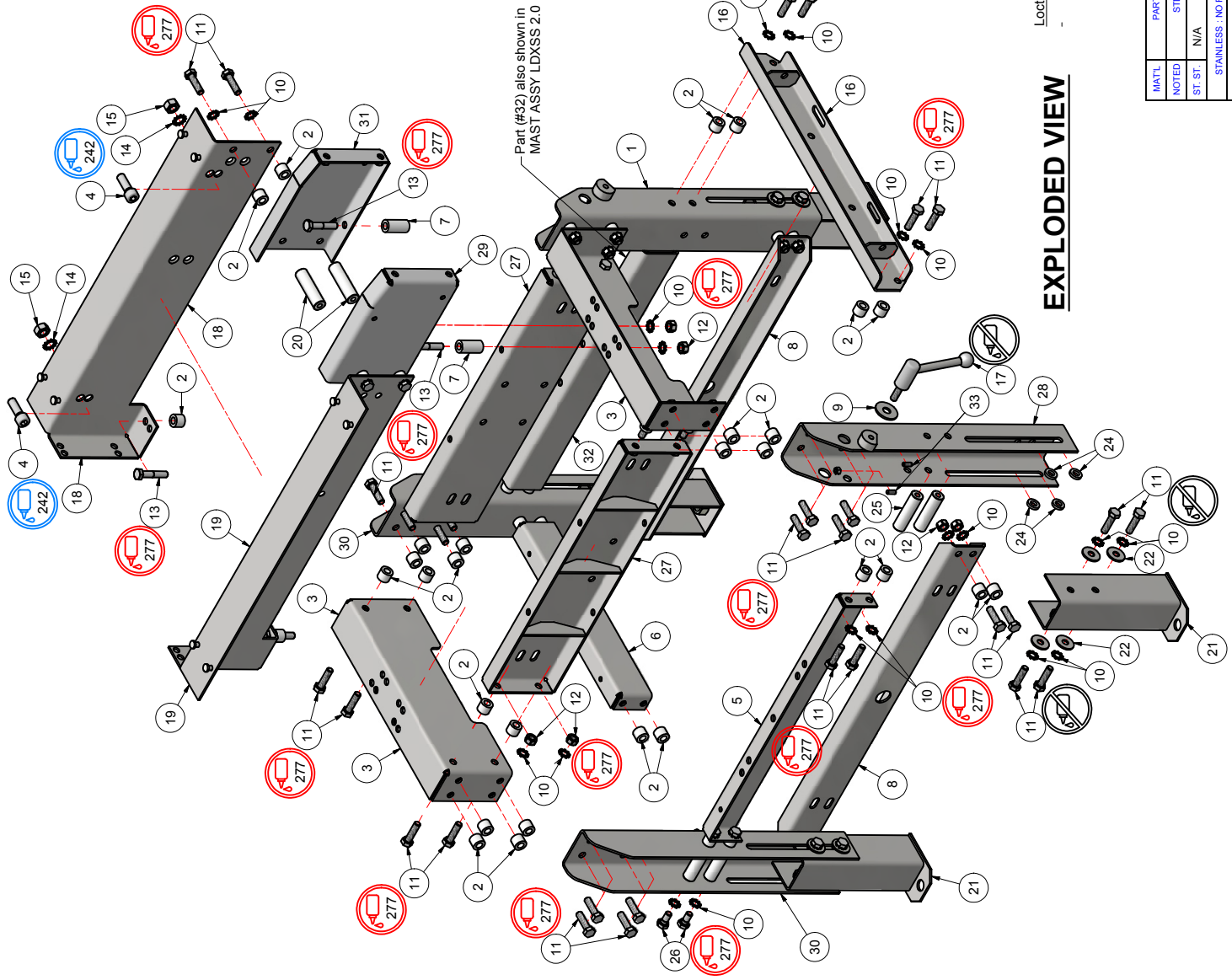
LOVESHAW an ITW Company
RT. 296, SOUTH CANAAN, PA.

REV	DESCRIPTION	DATE	APPROVED
A	RELEASED	1/3/2013	TONYS



ASSEMBLED VIEW

ITEM	QTY	PART NUMBER	DESCRIPTION
1	1	LDX-0456A-4SS	LEG
2	54	LDX-0455-3SS	STAND OFF
3	2	LDX-0461-4SS	TOP BRACE
4	4	FHM035S88	SHCS M10x30
5	1	LDX-0458-4SS	SIDE CROSS BRACE
6	1	LDX-0459-4SS	REAR CROSS BRACE
7	2	LDX-0455C-3SS	STAND OFF
8	2	LDX-0457-4SS	BOTTOM CROSS BRACE
9	1	SPH-1564	WASHER LARGE OD SS
10	76	FHMH030S10	External Tooth Lock Washer, M8 S.S.
11	60	FHMH040S10	HEX HD M8 x 30mm LG. S.S.
12	40	FHFMH8S	HEX NUT, M8 S.S.
13	4	FHMH040S10	HHCS M8 X 40
14	4	FETLWMIS	M10 External lock washer
15	4	FHFMH8S	HEX NUT M10
16	1	LDX-0460-4SS	FRONT CROSS BRACE
17	1	LDX-0462-4SS	SIDE RAIL KNOB
18	1	LDX-0464R-5SS	CENTER BRACE
19	1	LDX-0464L-5SS	CENTER BRACE
20	2	LDX-0552-3SS	STAND OFF BRACE
21	4	LDX-0558-4SS	LEG EXTENSION MAST
22	16	SPH-1400SS	WASHER, LARGE OD
23	8	FHMH025S10	HH M8 X 25 S.S.
24	16	LDX-0455F-3SS	STAND OFF
25	8	LDX-0552B-3SS	STAND OFF BRACE
26	4	FHMH016S10	HHCS M8 X 16 SS
27	2	LDX-0506-4SS	MAST CROSS BAR
28	1	LDX-0456A-4MISS	LEG
29	1	LDX-0463L-4SS	TOP FRONT BRACE
30	2	LDX-0585-4SS	LEG REAR
31	1	LDX-0463R-4SS	TOP FRONT BRACE
32	1	LDX-0565-4SS	MAST CROSS BRACE
33	4	FSSMF013S10	M5 x 13 SET SCREW SS



EXPLODED VIEW

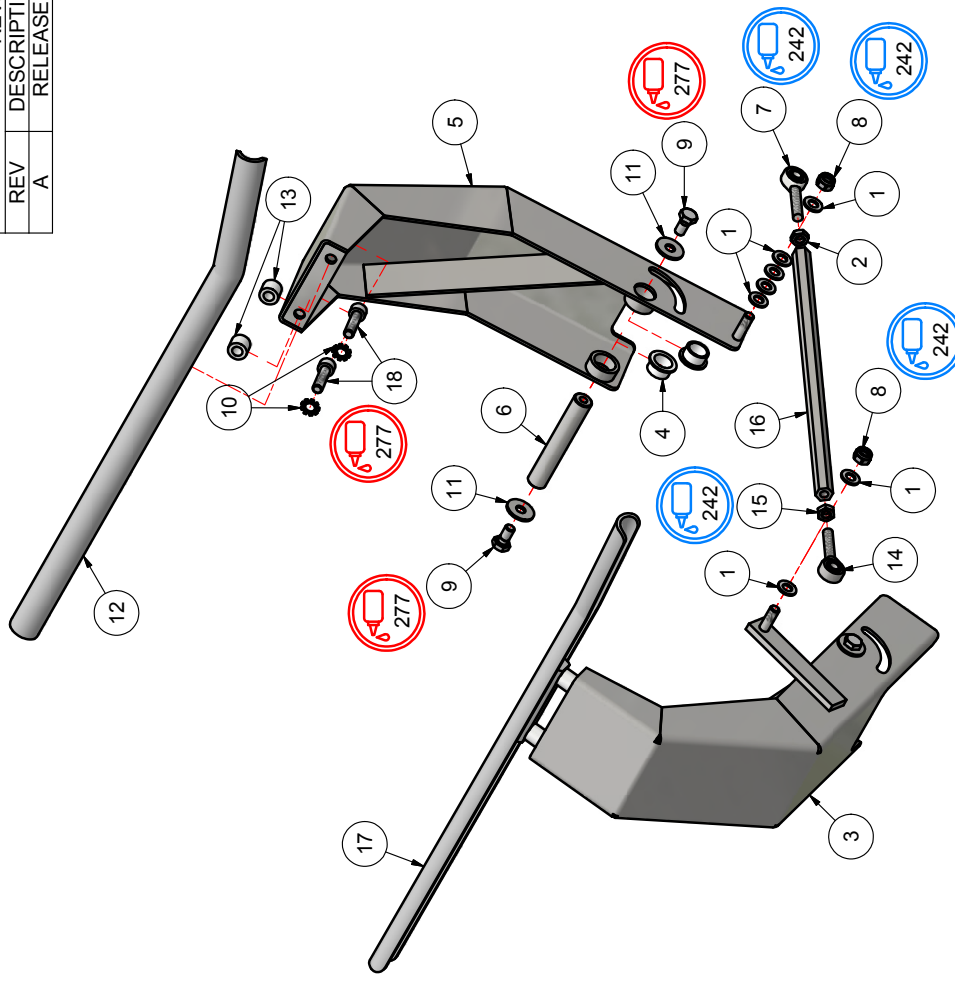
Loctite Application Note:
 277 is RED Loctite
 242 is BLUE Loctite
 538 is GREEN Loctite
 / is no Loctite applied

MATL	PART #	CAD FILE	FRA LDXXS 2.0
NOTED	STD	PLOT DATE	1/3/2013
ST. ST.	N/A	DRAWN DATE	1/3/2013
		STAINLESS: NO FINISH	
<small>THIS DRAWING IS THE PROPERTY OF LOVESHAW. IT IS TO BE USED FOR THE MANUFACTURE OF THE FRAME ASSEMBLY ONLY. IT IS NOT TO BE REPRODUCED OR TRANSMITTED IN ANY FORM OR BY ANY MEANS, WITHOUT THE EXPRESS WRITTEN CONSENT OF LOVESHAW. ITY AND VALUE RETURNED TO LOVESHAW-ITV UPON REQUEST.</small>			
<small>PERMANENCES UNLESS OTHERWISE NOTED:</small> X = ±.050 ANGLES ±.1/2° INCH XX = ±.015 .XXX = ±.005 X = ±1.0mm MACH. METRIC XX = ±.3mm FINISH .XXX = ±.1mm		TITLE FRAME ASSY LDXXS 2.0 DWG NO FRA LDXXS 2.0 REV 4 SCALE N/A MATERIAL NOTED CHECKED DRAWN TONY'S APPROVED TONY'S	

4 3 2 1

Parts List		
ITEM	QTY	DESCRIPTION
1	7	FFWMHS
2	1	FHJNSIS
3	1	LDX-0468-5SS
4	4	BRG-2026
5	1	LDX-0469-5SS
6	2	LDX-0475-3SS
7	1	PSC552SS
8	2	FNLNMHS
9	4	FHHMH016S10
10	4	FETLWMHS
11	4	SPH-1400SS
12	1	LDX-0577R-4SS
13	4	LDX-0455-3SS
14	1	PSC552LHSS
15	1	FHJNSIS LH
16	1	LDX-0515A-4SS
17	1	LDX-0577L-4SS
18	4	FSHMH030S10

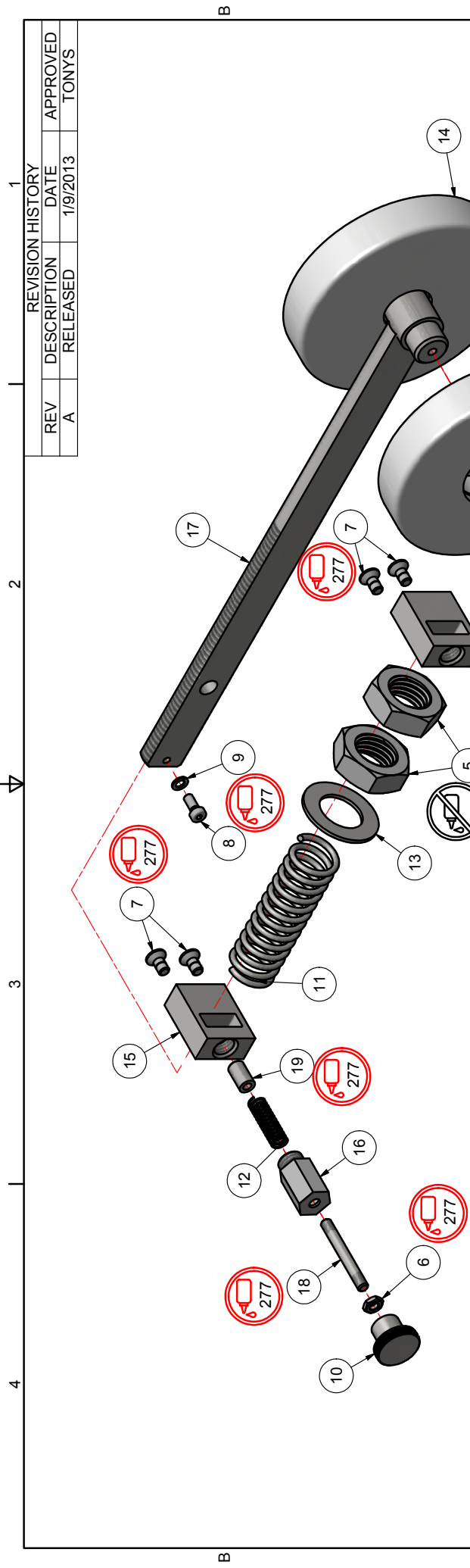
REVISION HISTORY			
REV	DESCRIPTION	DATE	APPROVED
A	RELEASED	1/2/2013	TONYS



MATL	PART #	CAD FILE	SRA LDXSS 2.0	DIFFERENCES UNLESS OTHERWISE NOTED:	LOVESHAW an ITW Company RT. 296, SOUTH CANAAN, PA.
NOTED	STD	PLOT DATE	1/2/2013		TITLE
ST. ST.	N/A	DRAWN DATE	1/2/2013	X = ±.050 INCH .XX = ±.015 .XXX = ±.005	ANGLES ±.12°
STAINLESS - NO FINISH			DO NOT SCALE PRINT		
THIS DRAWING AND SUBJECT MATTER THEREON IS THE EXCLUSIVE PROPERTY OF LOVESHAW-ITW AND IS TO BE TREATED BY YOU AS CONFIDENTIAL PROPRIETARY INFORMATION. THIS DRAWING OR SUBJECT MATTER THEREOF SHALL NOT BE REPRODUCED OTHER THAN FOR YOUR OWN USE OR TO BE DISCLOSED TO OTHER PERSONS WITHOUT THE WRITTEN PERMISSION OF LOVESHAW-ITW AND WILL BE RETURNED TO LOVESHAW-ITW UPON REQUEST.					
MATERIAL			NOTED		DWG NO SRA LDXSS 2.0 REV 4
DRAWN			TONYS		SCALE N/A
CHECKED			TONYS		CHECKED
APPROVED			TONYS		APPROVED TONY'S

Loctite Application Note:
 - 277 is RED Loctite
 - 242 is BLUE Loctite
 - 538 is GREEN Loctite
 - / is no Loctite applied

B A



Parts List

ITEM	QTY	PART NUMBER	DESCRIPTION
1	2	BRG-1090	BEARING
2	2	SPH-1311	RETAINING RING
3	2	SPH-1400	WASHER, LARGE OD
4	2	FHMH016S10	FHCS M8 X 16
5	2	FHJNSUS	1-8 UNC JAM NUT SS
6	1	FHJNMG6	M6 HEX JAM NUT
7	4	FFHMG012S10	FHCS M6x12 LG.
8	1	FSHMF012S10	SHCS M5 X 0.8 X 12 LG.
9	1	FLWMFS	LOCK WASHER M5
10	1	SPH-1566	KNOB
11	1	SPR-1077	SPRING
12	1	SPR-1076	SPRING
13	1	SPH-1567	WASHER LG OD
14	2	LDX-0521-4	IDLER ROLLER LG OD
15	2	LDX-0522-4SS	SUPPORT BLOCK
16	1	LDX-0523-3SS	PIN CUP
17	1	LDX-0524-4SS	TENSION BAR
18	1	LDX-0525-3SS	PIN
19	1	LDX-0526-3SS	PIN END

Loctite Application Note:
 - 277 is RED Loctite
 - 242 is BLUE Loctite
 - 538 is GREEN Loctite
 - / is no Loctite applied

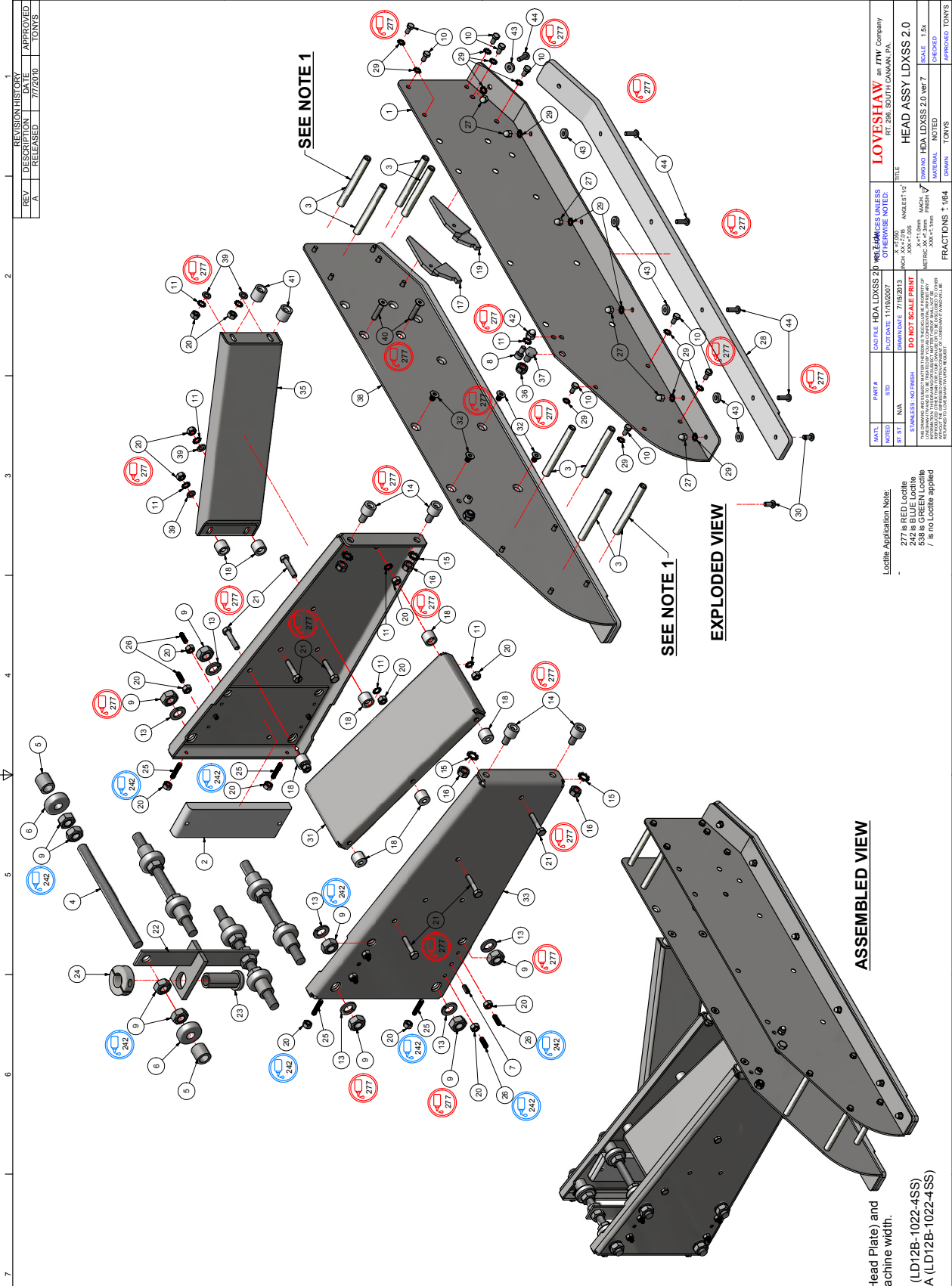
REVISION HISTORY			
REV	DESCRIPTION	DATE	APPROVED
A	RELEASED	1/9/2013	TONYS

MATL	PART #	CAD FILE	BTA LDXSS 2.0	INTOLERANCES UNLESS OTHERWISE NOTED:	LOVESHAW an ITW Company RT. 296, SOUTH CANAAN, PA.	
NOTED	STD	PLOT DATE	1/9/2013	X = ±.050 INCH .XX = ±.015 ANGLES ±.12° .XXX = ±.005	TITLE	
ST. ST.	N/A	DRAWN DATE	1/9/2013	DO NOT SCALE PRINT	BELT TENSION ASSY	
STAINLESS : NO FINISH				THIS DRAWING AND SUBJECT MATTER THEREON IS THE EXCLUSIVE PROPERTY OF LOVESHAW-ITW AND IS TO BE TREATED BY YOU AS CONFIDENTIAL PROPRIETARY INFORMATION. THIS DRAWING OR SUBJECT MATTER THEREOF SHALL NOT BE REPRODUCED OTHER THAN FOR YOUR OWN USE OR TO BE DISCLOSED TO OTHER PERSONS OR ORGANIZATIONS WITHOUT THE WRITTEN PERMISSION OF LOVESHAW-ITW AND WILL BE RETURNED TO LOVESHAW-ITW UPON REQUEST.	DWG NO	BTA LDXSS 2.0
				MACH. FINISH X = ±1.0mm METRIC .XX = ±.3mm .XXX = ±.1mm	MATERIAL	NOTED
				FRACTIONS ± 1/64	DRAWN	TONYS
					CHECKED	APPROVED TONY S

ITEM	QTY	PART NUMBER	DESCRIPTION
1	1	LDX-0576L-4SS	HEAD FRAME
2	1	LDX-0476-4	WEAR PAD
3	8	LD12B-1022-4SS	TIE BAR
4	1	LD12B-1022-4SS	BEAR ROLLER
5	8	PSC138A-3SS	SPACER
6	8	PSC138A-3SS	SPACER
7	4	PSC138A-3SS	SPACER
8	2	FSHNGM12S10	SHCS M6 X 1.0 X 12 LG.
9	20	FHMNM15	HEX NUT M12
10	18	FHMNP10S10	HHCS M6 X 0.8 X 10
11	13	FELTWMS	LOCK WASHER EXT.
12	1	FHMNGS	HEX WASHER M12
13	8	FHMNM15	LOCK WASHER M12
14	4	LDX-0488-3SS	STAND OFF STUD
15	4	FELVWMS	External Tooth Lock Washer, M6, S.S.
16	4	FHMNM15	HEX NUT M12
17	1	PSC192174R-4SS	TOP LOAD BRACKET LD7
18	8	LDX-0481-3SS	STAND OFF
19	1	PSC192174L-4SS	TOP LOAD BRACKET LD7
20	23	FHMNM15	HEX NUT M6
21	8	FHMNGS10	HHCS M6 X 30 SS
22	1	LDX-0488-3SS	STAND OFF BRKT
23	1	LDX-0488-3SS	M6 NUT
24	1	SPC-1007SS	FULL SPLIT COLLAR 3/4 SS
25	4	FSSMF025S10	SET SCREW M6 X 25 LG. S.S.
26	8	FSSMF016S10	SET SCREW M6 X 16 LG. S.S.
27	12	FHMNM15	HEX NUT M6
28	1	LDX-0488-3SS	STAND OFF BRKT
29	30	FELTWMS	EXT. LOCK WASHER M5 SS
30	2	FBHMF012P10	HEX SOC. BUTT. HD. SCREW
31	1	LDX-0485-4SS	NECK GUSSET
32	4	FHMNG10S10	SOC FF. M6x10mm LG.
33	1	LDX-0480-4SS	SS END PLATE
34	1	LDX-0488-4SS	NECK HEAD PLATE
35	1	LDX-0576-4SS	HEAD GUSSET
36	2	FNLNMS	NY LOCK NUT M8 S.S.
37	2	FHMNM12S10	HEX HEAD M8 X 12 SS
38	1	LDX-0576R-4SS	HEAD FRAME
39	4	FHMNM15	HEX NUT M6
40	2	FHMNGS10	HHCS M6 X 30
41	1	FHMNM15	HEX NUT M6
42	1	FHMNM15	HEX NUT M6
43	12	LDX-0568-3	SPACER, HEAD WEAR STRIP
44	10	FBHMF016S10	HHCS M6 X 16 SS

NOTE:

- Change tie bar between item #38 (Head Plate) and item #1 (Head Plate) for different machine width.
- 2 inch tape machine use (8) item #3 (LD12B-1022-4SS)
- 3 inch tape machine use (8) item #3A (LD12B-1022-4SS)



REVISION HISTORY		APPROVED	
REV	DESCRIPTION	DATE	TOWNS
A	RELEASED	7/7/2010	TOWNS

MATL.	PART #	DATE FILE	HDA LDXS 2.0	WELD/FINISH	UNLESS OTHERWISE NOTED:	TITLE
ST	N/A					HEAD ASSY LDXS 2.0
UNIT	N/A					SCALE 1:5A
STAINLESS	NO FINISH	DO NOT SCALE PRINT				

Loctite Application Note:
 277 is RED Loctite
 242 is BLUE Loctite
 538 is GREEN Loctite
 / is no Loctite applied

MATERIAL	NOTED	FRACCTIONS	TOWNS

LOVESHAW an ITW Company
 RT. 298, SOUTH CANAAN, PA.

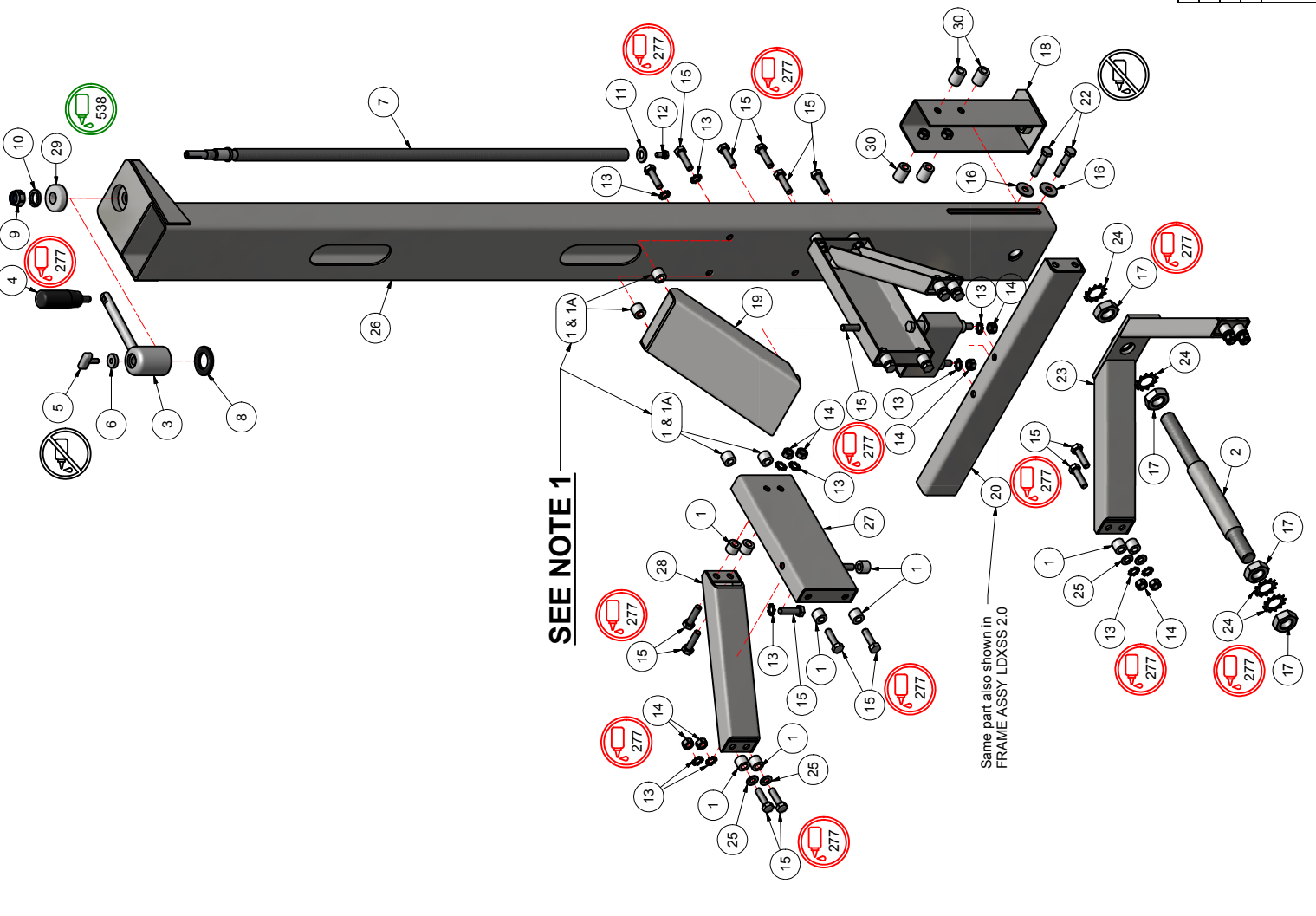
REV	DESCRIPTION	RELEASED	DATE	APPROVED
A			17/2013	TONYS

ITEM	QTY	PART NUMBER	DESCRIPTION
1	28	LDX-0455-3SS	STAND OFF
2	1	LDX-0505-4SS	MAST JACK SHAFT
3	1	LDW-0125-4SS	HANDLE
4	1	SPH-1283	HANDLE
5	1	SPH-1317	WING SCREW
6	1	LDW-0128-3SS	WASHER, LOCK KNOB
7	1	LDW-0139-4	MAST SCREW HEAD LIFTING
8	1	LDW-0135-3	WASHER, HANDLE
9	1	FNLNMJS	NYLOCK NUT M12 S.S.
10	1	LDW-0032-3	WASHER, MAST SCREW
11	1	FFWMIS	FLAT WASHER M10 SS
12	1	FHHMG012S10	HHCS M6 X 12 SS
13	28	FETLWMHS	External Tooth Lock Washer, M8 S.S.
14	24	FHFNMHS	HEX NUT, M8 S.S.
15	28	FHHMH030S10	HEX HD M8 x 30mm LG. S.S.
16	4	SPH-1400SS	WASHER, LARGE OD
17	6	FHJMSRS	HEX JAM NUT 3/4-10 SS
18	1	LDX-0558-4SS	LEG EXTENSION MAST
19	1	LDX-0562-4SS	MAST GUSSET
20	1	LDX-0565-4SS	MAST CROSS BRACE
21	1	LDX-0566-4SS	MAST BRACE BLOCK
22	4	FHHMH040S10	HHCS M8 X 40
23	1	LDX-0561-4SS	MAST SUPPORT BOTTOM
24	6	FETLWSJS	LOCK WASHER EXT. 3/4
25	8	FFWMHS	FLAT WASHER M8 SS
26	1	LDX-0508A-4SS	MAST, TUBE
27	2	LDX-0563-4SS	MAST BRACE
28	2	LDX-0564-4SS	MAST BRACE ANGLE
29	1	LDX-0594-3	MAST BUSHING
30	4	LDX-0455B-3	STAND OFF

- NOTE:**
- 1. Change stand off between item #28 (MAST TUBE) and #20 (MAST GUSSET) & #29 (MAST BRACE) for different machine width.
 - 2 inch tape machine uses (6) Item #1 (LDX-0455-3SS)
 - 3 inch tape machine uses (6) Item #1A (LDX-0455A-3SS)

Loctite Application Note:

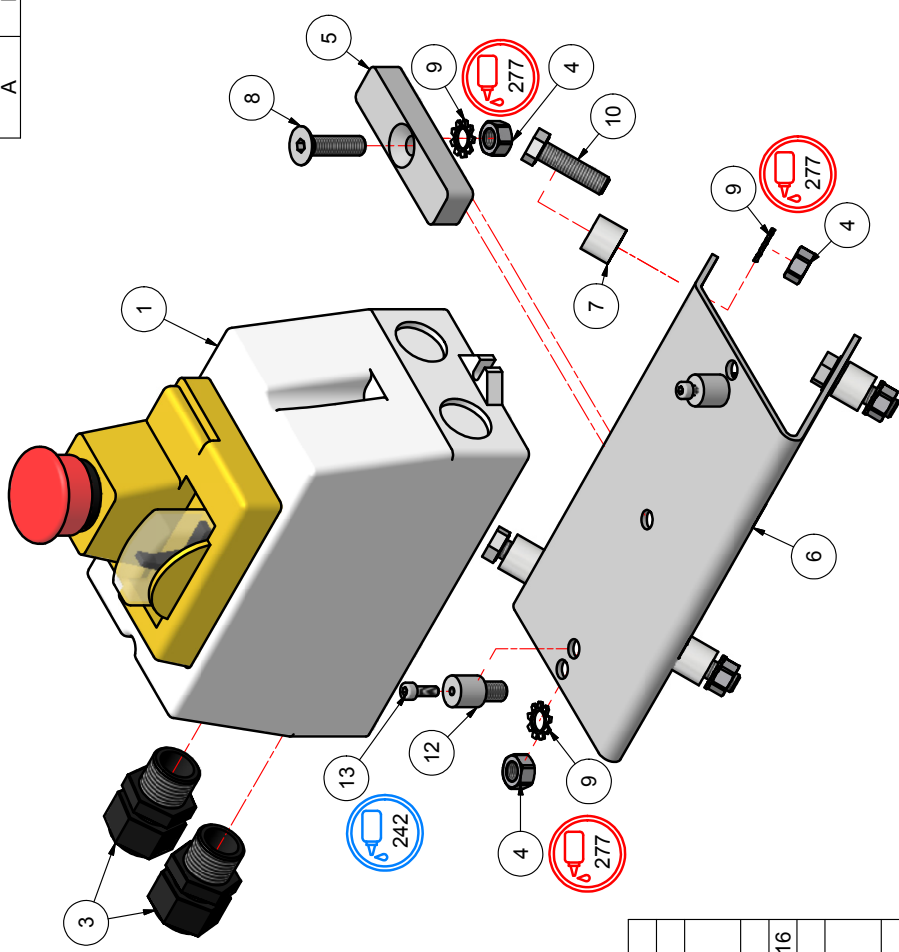
277 is RED Loctite
 242 is BLUE Loctite
 538 is GREEN Loctite
 / is no Loctite applied



MATL	PART #	CAD FILE	MTA LDXSS 2.0	DIFFERENCES UNLESS OTHERWISE NOTED:	LOVESHAW an ITW Company RT. 296 SOUTH CANNAN, PA.
NOTED	STD	PLOT DATE	1/7/2013		TITLE
ST. ST.	N/A	DRAWN DATE	1/7/2013		MAST ASSY LDXSS 2.0
					DWG NO MTA LDXSS 2.0 REV 6
					SCALE N/A
					MATERIAL NOTED
					CHECKED
					APPROVED
					TONYS
					TONYS

1 2 3 4

REVISION HISTORY			
REV	DESCRIPTION	DATE	APPROVED
A	RELEASED	7/29/2014	TONYS



Loctite Application Note:
 - 277 is RED Loctite
 - 242 is BLUE Loctite
 - 538 is GREEN Loctite
 - / is no Loctite applied

Parts List		
ITEM	QTY	DESCRIPTION
1	1	PSC636-EE-ENC SURFACE MOUNT ENCLOSURE
2	1	PSC636-EE-10A MOTOR STARTER
3	2	AH199F FITTING, STRAIN PG16
4	7	FHFNMH8 HEX NUT, M8 S.S.
5	1	LDX-0560-4 ELECT. BOX STAND OFF
6	1	LDX-0559-4 ELECT. BOX MOUNT
7	4	LDX-0455-3SS STAND OFF
8	1	FFHMH030S10 FLAT HD M8 x 30mm LG. S.S.
9	7	FETLWMH8 External Tooth Lock Washer, M8 S.S.
10	4	FHHMH030S10 HEX HD M8 x 30mm LG. S.S.
12	2	LDX-0610-3 ELECT. BOX STUD
13	2	FSHME012S10 M4-0.7 x 12mm SHCS

MATL	PART #	CAD FILE	EBA-LDXSS 2.0	REV 2.0	UNLESS NOTED OTHERWISE
NOTED	STD	PLOT DATE	7/29/2014		
ST. ST.	N/A	DRAWN DATE	7/29/2014		
DO NOT SCALE PRINT					
THIS DRAWING AND SUBJECT MATTER THEREON IS THE EXCLUSIVE PROPERTY OF LOVESHAW AND IS TO BE TREATED BY YOU AS CONFIDENTIAL PROPRIETARY INFORMATION. THIS DRAWING OR SUBJECT MATTER THEREOF SHALL NOT BE REPRODUCED OTHER THAN FOR YOUR OWN USE OR TO BE DISCLOSED TO OTHER PARTIES WITHOUT THE WRITTEN CONSENT OF LOVESHAW AND WILL BE RETURNED TO LOVESHAW UPON REQUEST.					
STAINLESS : NO FINISH					
X = ±.050 ANGLES ±.1/2° INCH .XX = ±.015 .XXX = ±.005 X = ±1.0mm MACH. FINISH METRIC .XX = ±.3mm .XXX = ±.1mm					
FRACTIONS ± 1/64					
DRAWN TONY S					
NOTED TONY S					
MATERIAL CHECKED					
DWG NO. EBA-LDXSS-2.0 SCALE N/A					
TITLE ELECT. BOX ASSY. CASE SEALER					
2206 EASTON TPK., SOUTH CANAAN, PA.					
LOVESHAW					

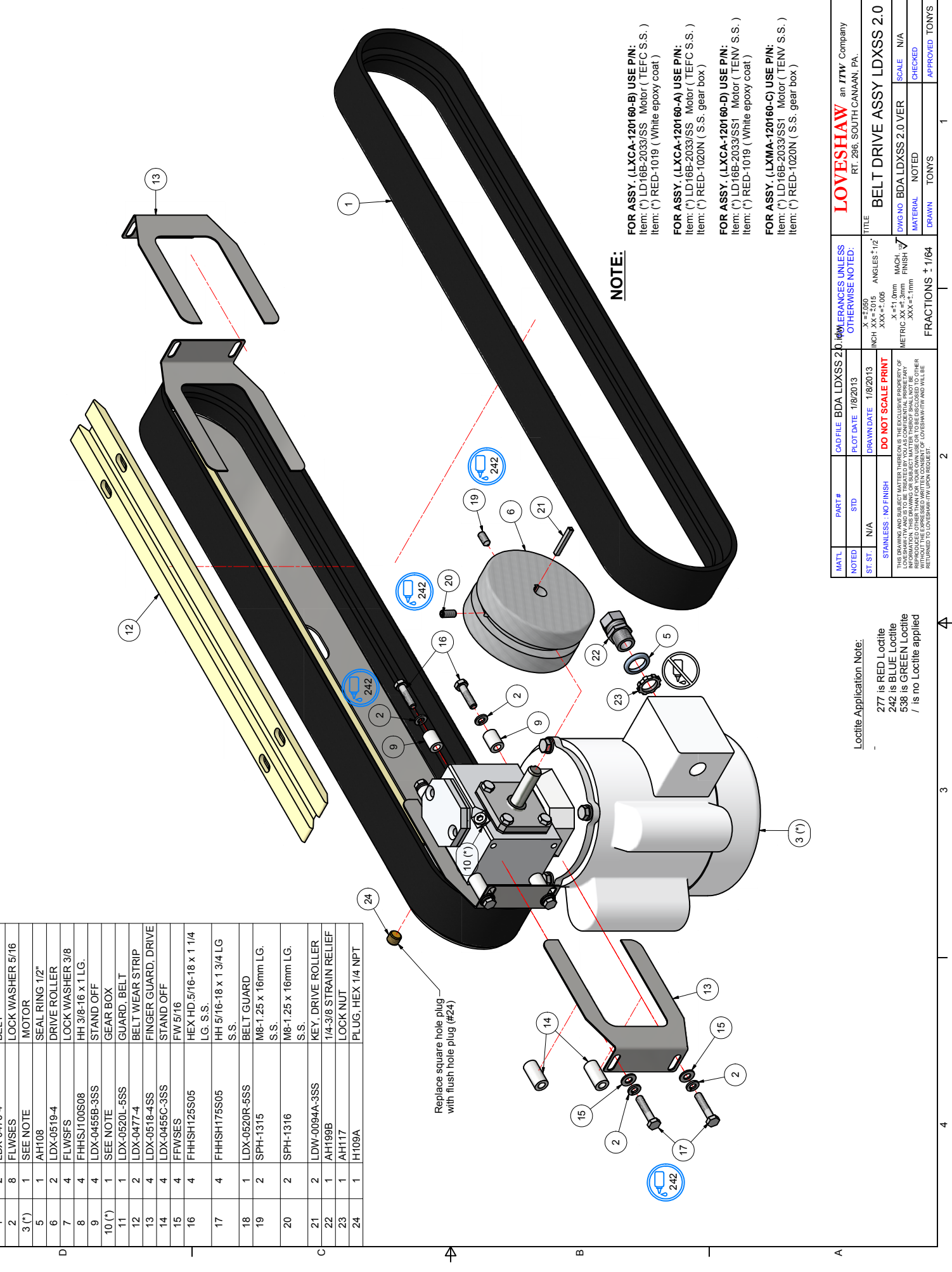
1 2 3 4

B

A

REV	DESCRIPTION	DATE	APPROVED
A	RELEASED	1/8/2013	TONYS

ITEM	QTY	PART NUMBER	DESCRIPTION
1	2	LDX-0476-4	BELT
2	8	FLWSES	LOCK WASHER 5/16
3 (*)	1	SEE NOTE	MOTOR
5	1	AH108	SEAL RING 1/2"
6	2	LDX-0519-4	DRIVE ROLLER
7	4	FLWSES	LOCK WASHER 3/8
8	4	FHHSJ100S08	HH 3/8-16 x 1 LG.
9	4	LDX-0455B-3SS	STAND OFF
10 (*)	1	SEE NOTE	GEAR BOX
11	1	LDX-0520L-5SS	GUARD, BELT
12	2	LDX-0477-4	BELT WEAR STRIP
13	4	LDX-0518-4SS	FINGER GUARD, DRIVE
14	4	LDX-0455C-3SS	STAND OFF
15	4	FWSES	FW 5/16
16	4	FHHSJ125S05	HEX HD. 5/16-18 x 1 1/4 LG. S.S.
17	4	FHHSJ175S05	HH 5/16-18 x 1 3/4 LG S.S.
18	1	LDX-0520R-5SS	BELT GUARD
19	2	SPH-1315	M8-1.25 x 16mm LG. S.S.
20	2	SPH-1316	M8-1.25 x 16mm LG. S.S.
21	2	LDW-0094A-3SS	KEY, DRIVE ROLLER
22	1	AH199B	1/4-3/8 STRAIN RELIEF
23	1	AH117	LOCK NUT
24	1	H109A	PLUG, HEX 1/4 NPT



NOTE:

FOR ASSY. (LXCA-120160-B) USE P/N:
 Item: (*) LD16B-2033/SS Motor (TEFC S.S.)
 Item: (*) RED-1019 (White epoxy coat)

FOR ASSY. (LXCA-120160-A) USE P/N:
 Item: (*) LD16B-2033/SS Motor (TEFC S.S.)
 Item: (*) RED-1020N (S.S. gear box)

FOR ASSY. (LXCA-120160-D) USE P/N:
 Item: (*) LD16B-2033/SS1 Motor (TENV S.S.)
 Item: (*) RED-1019 (White epoxy coat)

FOR ASSY. (LXMA-120160-C) USE P/N:
 Item: (*) LD16B-2033/SS1 Motor (TENV S.S.)
 Item: (*) RED-1020N (S.S. gear box)

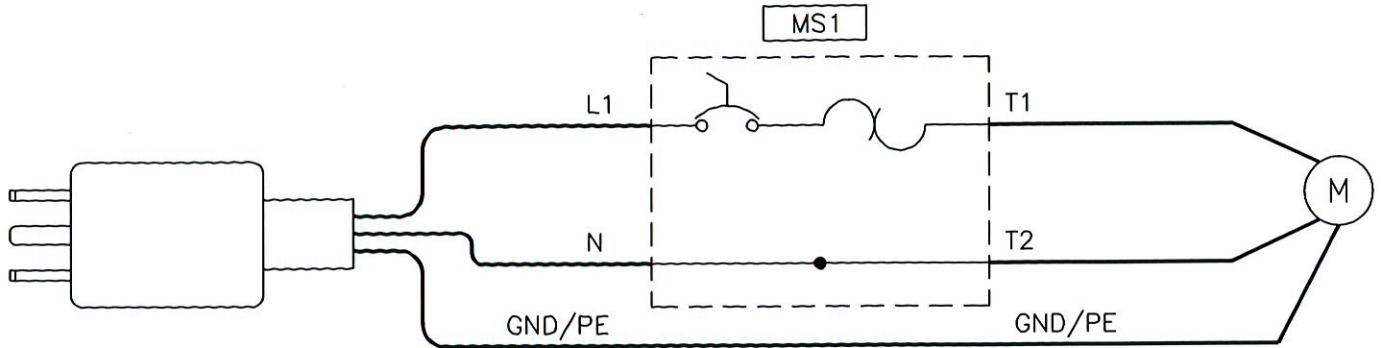
MATL	PART #	CAD FILE	BDA LDXSS 2.0	DATE	1/8/2013	PLT DATE	1/8/2013	OTHERWISE NOTED:	
NOTED	STD								
ST. ST.	N/A								
<p>DO NOT SCALE PRINT</p> <p>STAINLESS: NO FINISH</p> <p>FINISH: MACH</p> <p>ANGLES: ±1/2°</p> <p>INCH: XX ±.015</p> <p>METRIC: XX ±.3mm</p> <p>XXX ±.1mm</p> <p>FRACTIONS: ± 1/64</p>									
<p>LOVESHAW an ITW Company RT. 286, SOUTH CANAAN, PA.</p>								<p>TITLE BELT DRIVE ASSY LDXSS 2.0</p>	
<p>LOVESHAW reserves the right to make changes to this drawing without notice. THIS DRAWING IS THE PROPERTY OF LOVESHAW AND IS TO BE TREATED AS A CONFIDENTIAL PROPRIETARY INFORMATION. THIS DRAWING OR SUBJECT MATTER THEREOF SHALL NOT BE REPRODUCED, COPIED, OR TRANSMITTED IN ANY FORM OR BY ANY MEANS WITHOUT THE EXPRESS WRITTEN CONSENT OF LOVESHAW. ITY AND VALUE RETURNED TO LOVESHAW-ITW UPON REQUEST.</p>								<p>DWG NO BDA LDXSS 2.0 VER</p> <p>MATERIAL NOTED</p> <p>SCALE N/A</p> <p>CHECKED</p> <p>DRAWN TONY</p> <p>APPROVED TONY</p>	

Locite Application Note:

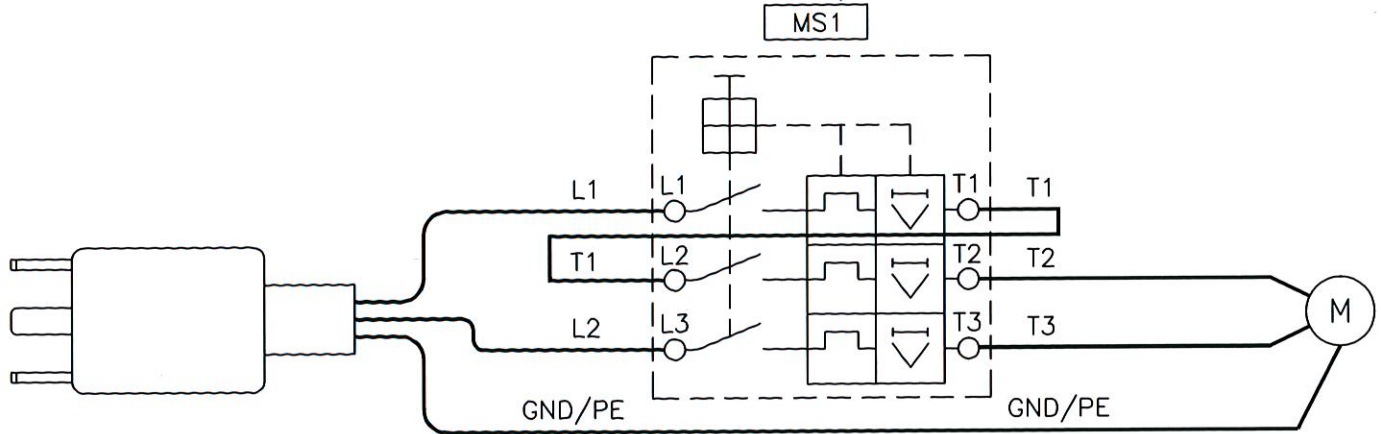
277 is RED Locite
 538 is GREEN Locite
 / is no Locite applied

ELECTRICAL SCHEMATIC
LEGEND, LD7, LD3, AND LDX, RTE

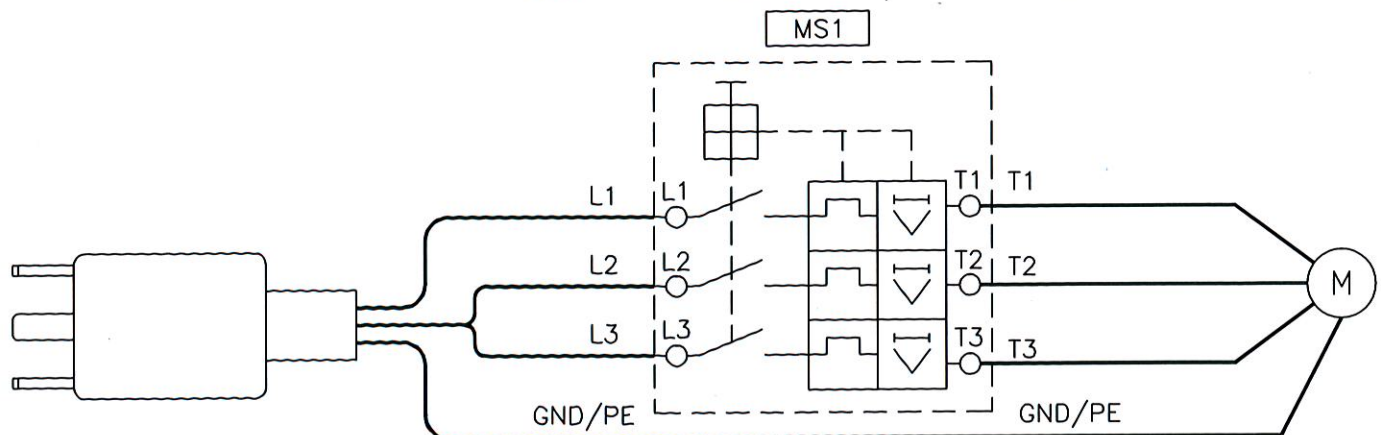
120 VAC 60HZ



SINGLE PHASE 50/60 HZ MODELS



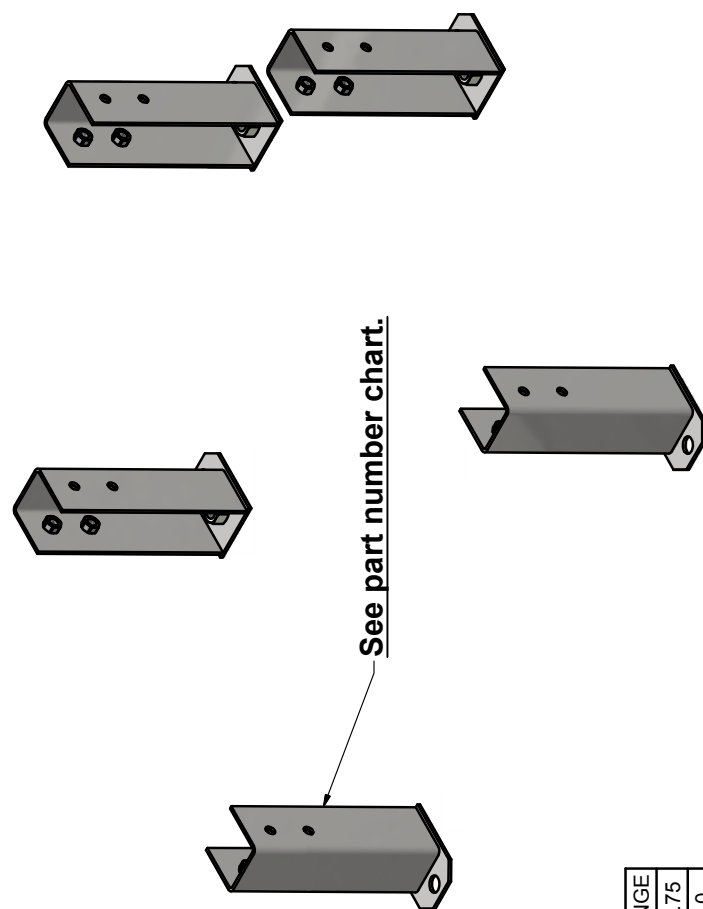
THREE PHASE 50/60 HZ MODELS



MACHINE AVAIABLE SPECIAL OPTIONS

1 2 3 4

REVISION HISTORY			
REV	DESCRIPTION	DATE	APPROVED
A	RELEASED	1/3/2013	TONYS



ASSY. NUMBER	PART NO.	CONV. RANGE
STANDARD	LDX-0558-4SS	22.25 to 25.75
.LEA/LDXSS25	LDX-0558A-4SS	25.5 to 29.0
.LEA/LDXSS28	LDX-0558B-4SS	28.5 to 32.0
.LEA/LDXSS31	LDX-0558C-4SS	31.5 to 35.0

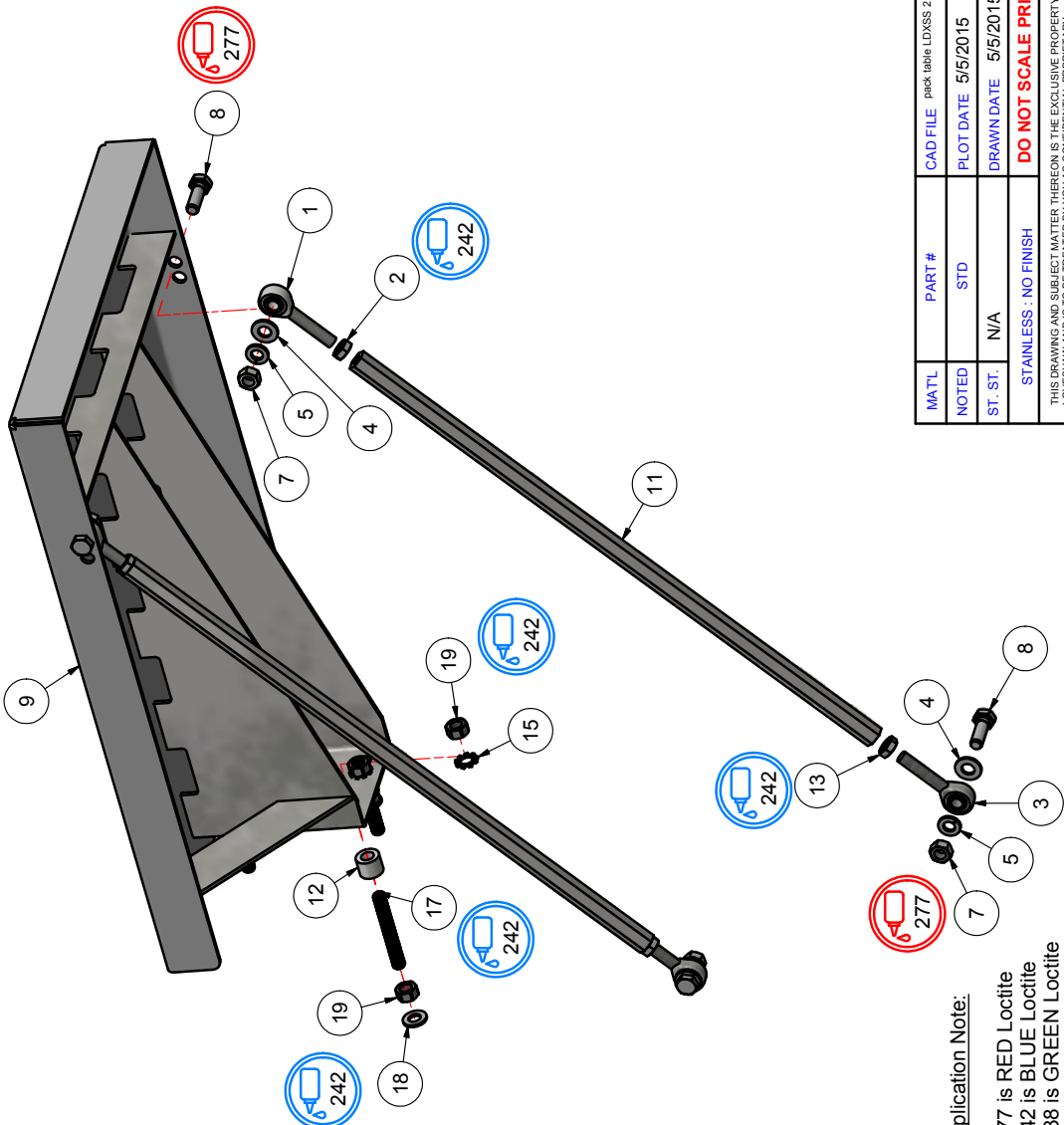
MATL	PART #	CAD FILE	LEA_LDXSS.iwm	TOLERANCES UNLESS OTHERWISE NOTED:	LOVESHAW an ITW Company RT. 296, SOUTH CANAAN, PA.
NOTED	STD	PLOT DATE	1/3/2013	X = ±.050 INCH .XX = ±.015 .XXX = ±.005	TITLE LEG EXTENSION ASSY
ST. ST.	N/A	DRAWN DATE	1/3/2013	ANGLES ±.12° .XXX = ±.005 X = ±1.0mm MACH. FINISH METRIC .XX = ±.3mm .XXX = ±.1mm	DWG NO. .LEA/LDXSS SCALE N/A MATERIAL NOTED CHECKED DRAWN TONY S APPROVED TONY S
STAINLESS : NO FINISH				FRACTIONS ± 1/64	
THIS DRAWING AND SUBJECT MATTER THEREON IS THE EXCLUSIVE PROPERTY OF LOVESHAW-ITW AND IS TO BE TREATED BY YOU AS CONFIDENTIAL PROPRIETARY INFORMATION. THIS DRAWING OR SUBJECT MATTER THEREOF SHALL NOT BE REPRODUCED OTHER THAN FOR YOUR OWN USE OR TO BE DISCLOSED TO OTHER PERSONS WITHOUT THE WRITTEN CONSENT OF LOVESHAW-ITW AND WILL BE RETURNED TO LOVESHAW-ITW UPON REQUEST.					

B B

A A

1 2 3 4

REVISION HISTORY			
REV	DESCRIPTION	DATE	APPROVED
A	RELEASED	5/5/2015	TONYS



Parts List			
ITEM	QTY	PART NUMBER	DESCRIPTION
1	2	PSC552SS	SPHERICAL ALIGN BEARING
2	2	FHJNSIS	HEX JAM NUT, 5/16-24
3	2	PSC552LHSS	SPHERICAL ALIGN BEARING (LH) SS
4	4	FFWSES	FW 5/16
5	4	FLWSEP	LOCK WASHER 5/16
7	4	FHFNSHS	5/16 X 18 HEX NUT
8	4	FHSH100S08	HH 5/16-18 x 1 LG.
9	1	LDX-0513-5	PACK TABLE, FLAT
11	2	LDX-0515-4	SUPPORT ROD
12	4	LDX-0455-3SS	STAND OFF
13	2	FHJNSIS LH	HEX JAM NUT, 5/16-24
15	4	FETLWMHS	External Tooth Lock Washer, M8 S.S.
17	4	FSSMH060S10	M8x60 LG. SET SCREW
18	4	FFWMHP	FLAT WASHER M8
19	8	FHFNMHS	HEX NUT, M8 S.S.

MATL	PART #	CAD FILE	pack table LDXSS 2.0 rev 3.dwg
NOTED	STD	PLOT DATE	5/5/2015
ST. ST.	N/A	DRAWN DATE	5/5/2015
STAINLESS : NO FINISH			
<p>THIS DRAWING AND SUBJECT MATTER THEREON IS THE EXCLUSIVE PROPERTY OF LOVESHAW AND IS TO BE TREATED BY YOU AS CONFIDENTIAL PROPRIETARY INFORMATION. THIS DRAWING OR SUBJECT MATTER THEREOF SHALL NOT BE REPRODUCED OTHER THAN FOR YOUR OWN USE OR TO BE DISCLOSED TO OTHERS WITHOUT THE WRITTEN CONSENT OF LOVESHAW AND WILL BE RETURNED TO LOVESHAW UPON REQUEST.</p>			
TOLERANCES UNLESS OTHERWISE NOTED:		INCH .XX = ±.015 ANGLES ±.1/2° .XXX = ±.005 .X = ±1.0mm MACH. FINISH METRIC .XX = ±.3mm .XXX = ±.1mm	
FRACTIONS ± 1/64		DRAWN tonys	

LOVESHAW
2206 EASTON TPK., SOUTH CANAAN, PA.

PACK TABLE LDXSS 2.0

DWG NO. pack table LDXSS 2.0 rev 3

MATERIAL NOTED

SCALE N/A

CHECKED

DRAWN tonys

APPROVED TONY S

Loctite Application Note:
 277 is RED Loctite
 242 is BLUE Loctite
 538 is GREEN Loctite
 / is no Loctite applied

1

B

A

A

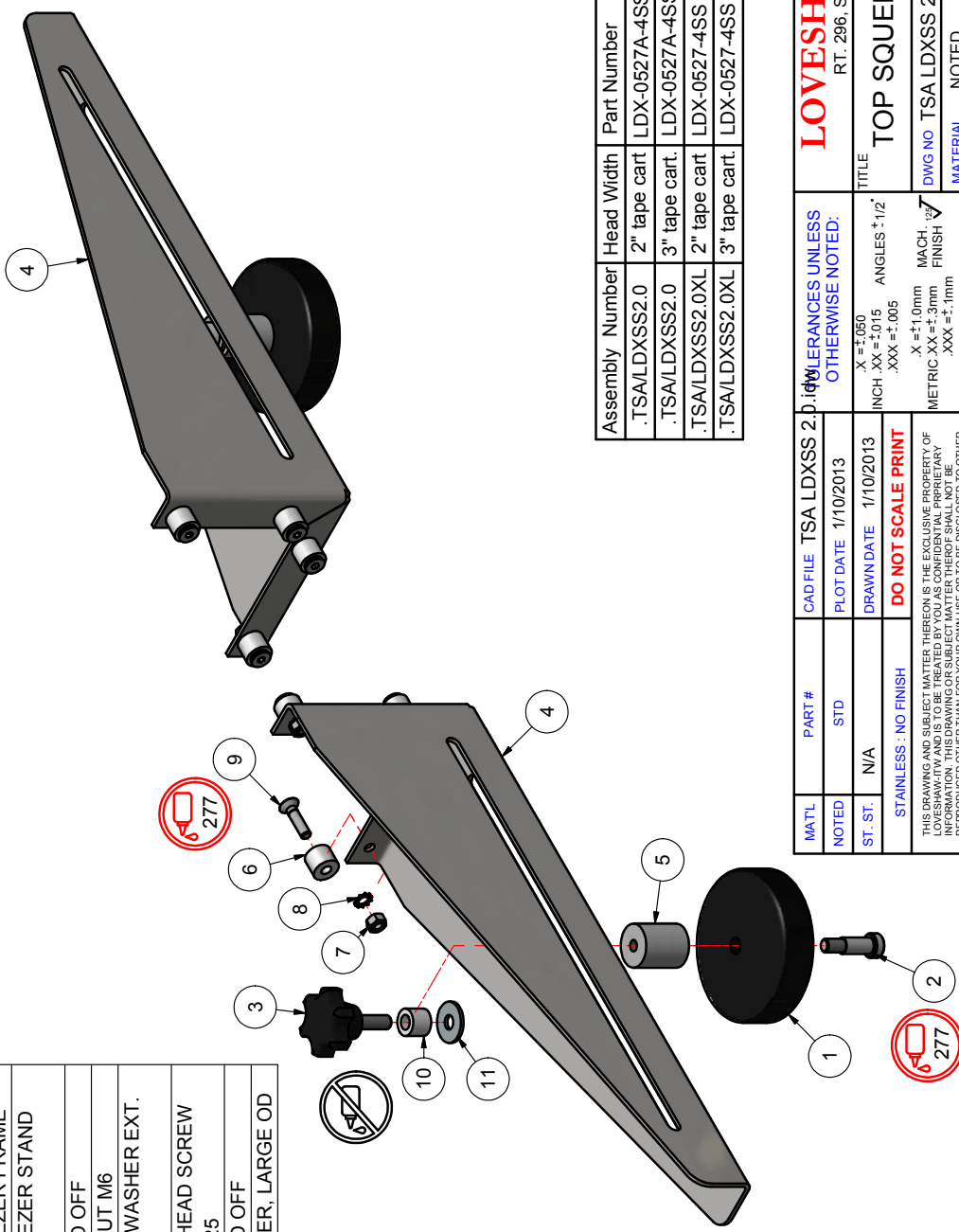
1

4 3 2 1

Parts List

ITEM	QTY	PART NUMBER	DESCRIPTION
1	2	LDW-0093-3	SQUEEZER WHEEL
2	2	SPH-1437	BOLT, SHOULDER
3	2	SPH-1300	KNOB
4	2	See Chart	SQUEEZER FRAME
5	2	LDW-0123B-3SS	SQUEEZER STAND OFF
6	8	LDX-0481-3SS	STAND OFF
7	8	FHFNMG5	HEX NUT M6
8	8	FETLWMGS	LOCK WASHER EXT. M6
9	8	FFHMG025S10	FLAT HEAD SCREW M6 X 25
10	2	LDX-0455-3SS	STAND OFF
11	2	SPH-1400	WASHER, LARGE OD

REVISION HISTORY			
REV	DESCRIPTION	DATE	APPROVED
A	RELEASED	1/10/2013	TONYS



Assembly Number	Head Width	Part Number	Squeezer Range
.TSA/LDXSS2.0	2" tape cart.	LDX-0527A-4SS	4.5" to 22.5"
.TSA/LDXSS2.0	3" tape cart.	LDX-0527A-4SS	5.5" to 23.5"
.TSA/LDXSS2.0XL	2" tape cart.	LDX-0527-4SS	4.5" to 27"
.TSA/LDXSS2.0XL	3" tape cart.	LDX-0527-4SS	5.5" to 27"

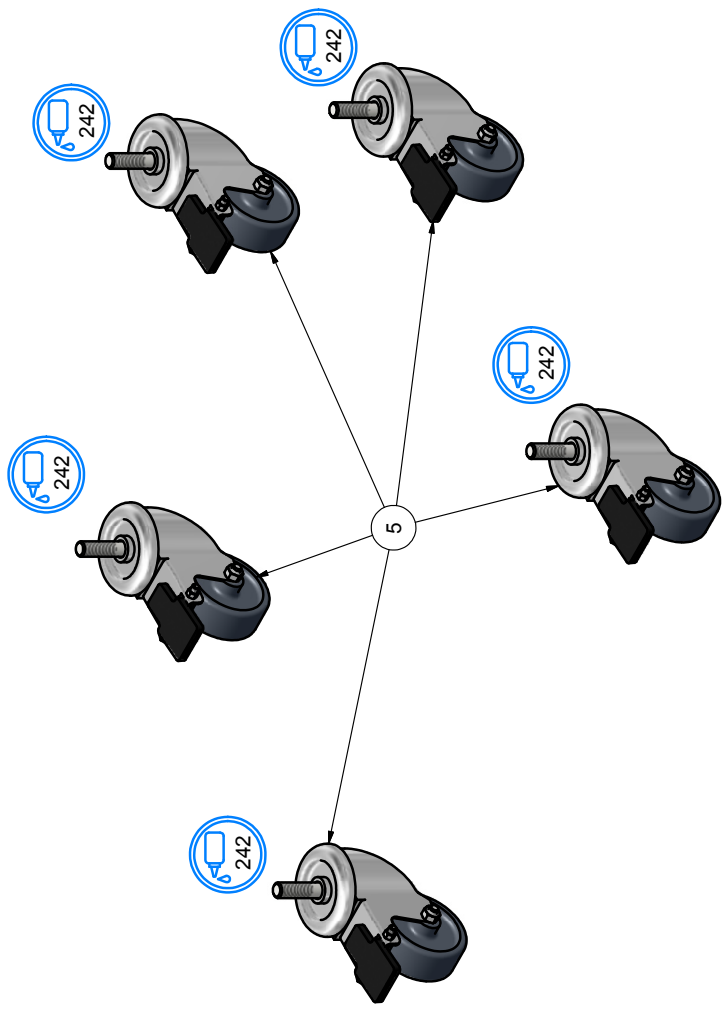
MATL	PART #	CAD FILE	TSA LDXSS 2.0	DATE	1/10/2013
NOTED	STD			PLOT DATE	1/10/2013
ST. ST.	N/A			DRAWN DATE	1/10/2013
STAINLESS - NO FINISH					
<p>THIS DRAWING AND SUBJECT MATTER THEREON IS THE EXCLUSIVE PROPERTY OF LOVESHAW.ITW AND IS TO BE TREATED BY YOU AS CONFIDENTIAL PROPRIETARY INFORMATION. THIS DRAWING OR SUBJECT MATTER THEREOF SHALL NOT BE REPRODUCED OTHER THAN FOR YOUR OWN USE OR TO BE DISCLOSED TO OTHER PERSONS WITHOUT THE WRITTEN CONSENT OF LOVESHAW.ITW AND WILL BE RETURNED TO LOVESHAW.ITW UPON REQUEST.</p>					
<p>DO NOT SCALE PRINT</p>					
<p>INCH .XX = ±.015 ANGLES ±.1/2° X = ±.050 .XXX = ±.005 .X = ±1.0mm MACH. FINISH METRIC .XX = ±.3mm .XXX = ±.1mm</p>					
<p>FRACTIONS ± 1/64</p>					
<p>LOVESHAW an ITW Company RT. 296, SOUTH CANAAN, PA.</p>					
<p>TITLE TOP SQUEEZER ASSY. LDXSS</p>					
<p>DWG NO TSA LDXSS 2.0</p>					
<p>MATERIAL NOTED</p>					
<p>SCALE N/A</p>					
<p>CHECKED</p>					
<p>DRAWN TONY S</p>					
<p>APPROVED TONY S</p>					

Loctite Application Note:
 277 is RED Loctite
 242 is BLUE Loctite
 538 is GREEN Loctite
 / is no Loctite applied

4 3 2 1

1 2 3 4

REVISION HISTORY			
REV	DESCRIPTION	DATE	APPROVED
A	RELEASED	12/12/2013	TONYS



Parts List		
ITEM	QTY	DESCRIPTION
5	5	OPC511ASS CASTER S.S. SWIVEL

MATL	PART #	CAD FILE	LDXSS 2.0 CASTER ASSY.dwg
NOTED	STD	PLOT DATE	12/12/2013
ST. ST.	N/A	DRAWN DATE	12/12/2013
STAINLESS : NO FINISH			
<p>THIS DRAWING AND SUBJECT MATTER THEREON IS THE EXCLUSIVE PROPERTY OF LOVESHAW-ITW AND IS TO BE TREATED BY YOU AS CONFIDENTIAL PROPRIETARY INFORMATION. THIS DRAWING OR SUBJECT MATTER THEREOF SHALL NOT BE REPRODUCED OTHER THAN FOR YOUR OWN USE OR TO BE DISCLOSED TO OTHER PERSONS WITHOUT THE WRITTEN CONSENT OF LOVESHAW-ITW AND WILL BE RETURNED TO LOVESHAW-ITW UPON REQUEST.</p>			
<p>LOVESHAW an ITW Company RT. 296, SOUTH CANAAN, PA.</p>		<p>TOLERANCES UNLESS OTHERWISE NOTED: X = ±.050 INCH XX = ±.015 ANGLES ±.12° .XXX = ±.005 X = ±1.0mm MACH. FINISH METRIC .XX = ±.3mm .XXX = ±.1mm</p>	
TITLE		CASTER ASSY (LDXSS 2.0)	
DWG NO.		LDG.LDXSSZ	
MATERIAL		NOTED	
DRAWN		TONYS	
CHECKED		N/A	
APPROVED		TONYS	

Loctite Application Note:
 - 277 is RED Loctite
 - 242 is BLUE Loctite
 - 538 is GREEN Loctite
 - / is no Loctite applied

1 2 3 4

A B

1 2 3 4